

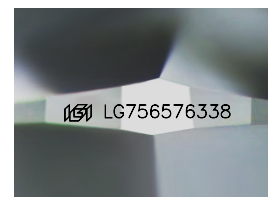
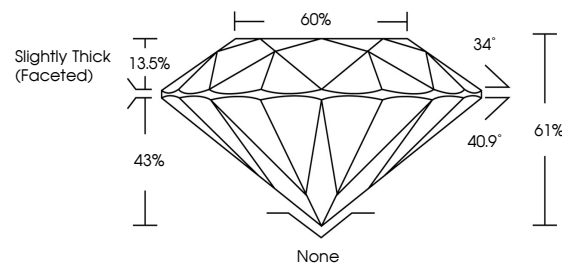


ELECTRONIC COPY

LABORATORY GROWN DIAMOND REPORT

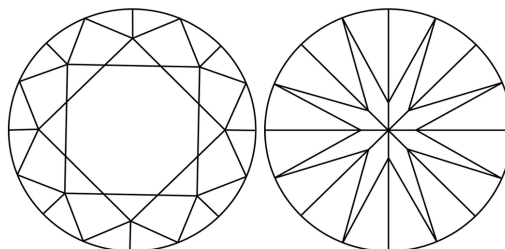
LG756576338
Report verification at igi.org

PROPORTIONS



Sample Image Used

CLARITY CHARACTERISTICS



KEY TO SYMBOLS

Red symbols indicate internal characteristics.
Green symbols indicate external characteristics.

COLOR

D E F G H I J Faint Very Light Light

CLARITY

FL	IF	VVS ¹⁻²	VS ¹⁻²	SI ¹⁻²	I ¹⁻³
Flawless	Internally Flawless	Very Very Slightly Included	Very Slightly Included	Slightly Included	Included

LABORATORY GROWN DIAMOND REPORT



January 20, 2026

IGI Report Number **LG756576338**Description **LABORATORY GROWN DIAMOND**Shape and Cutting Style **ROUND BRILLIANT**

Measurements 8.03 - 8.09 X 4.92 MM

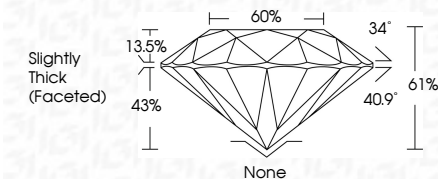
GRADING RESULTS

Carat Weight **2.00 CARATS**

Color Grade E

Clarity Grade **FLAWLESS**

Cut Grade **EXCELLENT**



ADDITIONAL GRADING INFORMATION

Polish EXCELLENT

Symmetry **EXCELLENT**Fluorescence **NONE**Inscription(s) LG756576338

Comments: This Laboratory Grown Diamond was created by Chemical Vapor Deposition (CVD) growth process.
Type IIa



© IGI 2020, International Gemological Institute

FD - 10 20



THIS DOCUMENT WAS PRODUCED WITH THE FOLLOWING SECURITY MEASURES: SPECIAL DOCUMENT PAPER, INK SCREENS, WATERMARK, BACKGROUND DESIGNS, HOLOGRAM AND OTHER SECURITY FEATURES NOT LISTED AND DO EXCEED DOCUMENT SECURITY INDUSTRY GUIDELINES

January 20, 2026
GI Report No LG756576338
ROUND BRILLIANT

ROUND BRILLIANT	2.00 CARATS	FLAWLESS	61%	Slightly Thick (Faceted)
8.03 - 8.09 X 4.92 MM	Carat Weight	EXCELLENT	60%	
	Color Grade			
	Clarity Grade			
	Out Grade			
	Depth			
	Table			
	Girdle			

Culet	None
Polish	EXCELLENT
Symmetry	EXCELLENT
Fluorescence	NONE

4681 C754574339

Comments:
This Laboratory Grown Diamond was
created by Chemical Vapor Deposition
(CVD) growth process.

www.igi.org