

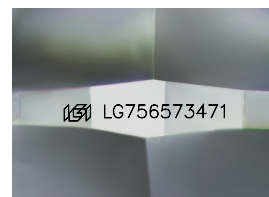
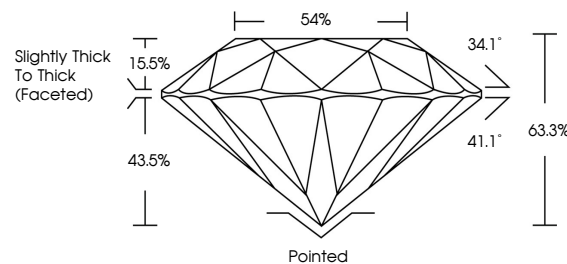


ELECTRONIC COPY

LABORATORY GROWN DIAMOND REPORT

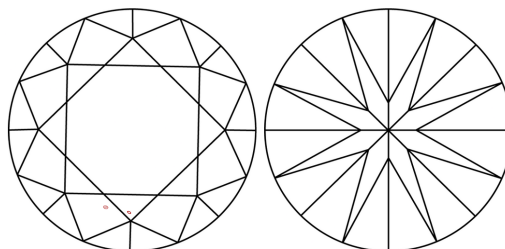
LG756573471
Report verification at lgi.org

PROPORTIONS



Sample Image Used

CLARITY CHARACTERISTICS



KEY TO SYMBOLS

Red symbols indicate internal characteristics.
Green symbols indicate external characteristics.

COLOR

D E F G H I J Faint Very Light Light

CLARITY

FL	IF	VVS ¹⁻²	VS ¹⁻²	SI ¹⁻²	I ¹⁻³
Flawless	Internally Flawless	Very Very Slightly Included	Very Slightly Included	Slightly Included	Included

LABORATORY GROWN DIAMOND REPORT



January 17, 2026

IGI Report Number **LG756573471**Description **LABORATORY GROWN DIAMOND**Shape and Cutting Style **ROUND BRILLIANT**

Measurements 6.31 - 6.40 X 4.03 MM

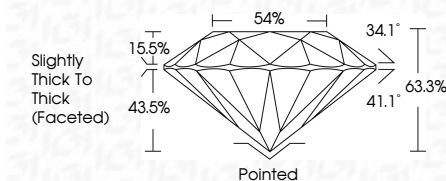
GRADING RESULTS

Carat Weight 1.01 CARAT

Color Grade

Clarity Grade VS 1

Cut Grade **VERY GOOD**



ADDITIONAL GRADING INFORMATION

Polish VERY GOOD

Symmetry **VERY GOOD**Fluorescence **NONE**Inscription(s) LG756573471

Comments: As Grown - No indication of post-growth treatment.

This Laboratory Grown Diamond was created by High Pressure High Temperature (HPHT) growth process.

Type II



© IGI 2020, International Gemological Institute

FD - 10 20

www.igi.org

January 17, 2026
GI Report No LG75
ROUND BRILLIANT

3.31 - 6.40 X 4.03 MM	1.01 CARAT
Color Grade	D
Clarity Grade	VS 1
Depth	VERY GOOD
Table	63.5%
Girdle	54%
Culet	Slightly Thick to Thick (faceted)
Polish	Pointed
Symmetry	VERY GOOD
Fluorescence	VERY GOOD
	NONE
	4441 (2745479371)

Comments:
As Grown - No indication of post-growth treatment.
This Laboratory Grown Diamond was created by High Pressure High temperature (HPHT) growth process.

THIS DOCUMENT WAS PRODUCED WITH THE FOLLOWING SECURITY MEASURES: SPECIAL DOCUMENT PAPER, INK SCREENS, WATERMARK, BACKGROUND DESIGNS, HOLOGRAM AND OTHER SECURITY FEATURES NOT LISTED AND DO EXCEED DOCUMENT SECURITY INDUSTRY GUIDELINE