

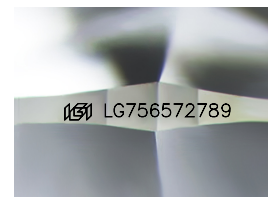
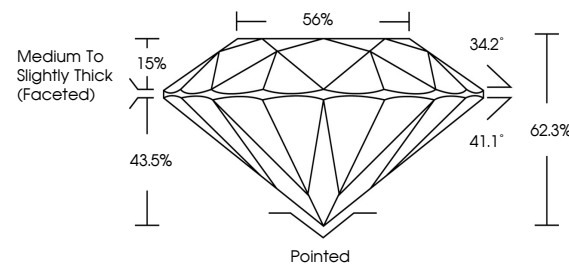


**ELECTRONIC COPY**

## LABORATORY GROWN DIAMOND REPORT

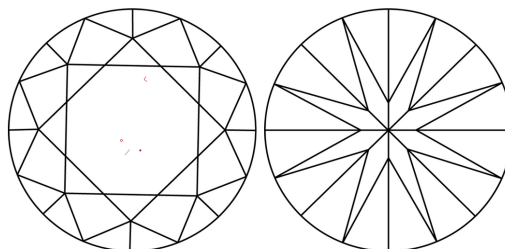
LG756572789  
Report verification at [igi.org](https://igi.org)

## PROPORTIONS



Sample Image Used

## CLARITY CHARACTERISTICS



### KEY TO SYMBOLS

Red symbols indicate internal characteristics.  
Green symbols indicate external characteristics.

## COLOR

D E F G H I J Faint Very Light Light

## CLARITY

FL	IF	VVS <sup>1-2</sup>	VS <sup>1-2</sup>	SI <sup>1-2</sup>	I <sup>1-3</sup>
Flawless	Internally Flawless	Very Very Slightly Included	Very Slightly Included	Slightly Included	Included

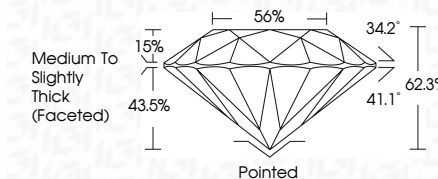
## LABORATORY GROWN DIAMOND REPORT



January 5, 2026	
IGI Report Number	LG756572789
Description	LABORATORY GROWN DIAMOND
Shape and Cutting Style	ROUND BRILLIANT
Measurements	9.08 - 9.14 X 5.68 MM

## GRADING RESULTS

Carat Weight	2.90 CARATS
Color Grade	D
Clarity Grade	VVS 2
Cut Grade	IDEAL



### ADDITIONAL GRADING INFORMATION

Polish	EXCELLENT
Symmetry	EXCELLENT
Fluorescence	NONE
Inscription(s)	<del>163</del> LG756572789
Comments: This Laboratory Grown Diamond was created by Chemical Vapor Deposition (CVD) growth process.	
Type IIa	



© IGI 2020, International Gemological Institute

FD - 10 20



THIS DOCUMENT WAS PRODUCED WITH THE FOLLOWING SECURITY MEASURES: SPECIAL DOCUMENT PAPER, INK SCREENS, WATERMARK, BACKGROUND DESIGNS, HOLOGRAM AND OTHER SECURITY FEATURES NOT LISTED AND DO EXCEED DOCUMENT SECURITY INDUSTRY GUIDELINES

**www.igi.org**

January 5, 2026  
GI Report No LG756572789  
ROUND BRILLIANT

2.08 - 9.14 X 5.68 MM	2.90 CARATS	D
Carat Weight	VVS 2	Pointed
Color Grade	IDEAL	EXCELLENT
Clarity Grade	62-95%	EXCELLENT
Cut Grade	56%	NONE
Depth	Medium to Slightly Thick (Faceted)	
Table		
Girdle		
Culet		
Polish		
Symmetry		
Fluorescence		

**Comments:**  
This Laboratory Grown Diamond was created by Chemical Vapor Deposition (CVD) growth process.