



ELECTRONIC COPY

LG756571469
Report verification at igi.org



December 19, 2025

IGI Report Number **LG756571469**

Description **LABORATORY GROWN DIAMOND**

Shape and Cutting Style **CUT CORNERED
RECTANGULAR MODIFIED
BRILLIANT**

Measurements **9.94 X 6.84 X 4.43 MM**

GRADING RESULTS

Carat Weight **2.69 CARATS**

Color Grade **FANCY INTENSE PINK**

Clarity Grade **VVS 2**

December 19, 2025
IGI Report Number **LG756571469**
Description **LABORATORY GROWN DIAMOND**
Shape and Cutting Style **CUT CORNERED RECTANGULAR
MODIFIED BRILLIANT**
Measurements **9.94 X 6.84 X 4.43 MM**

GRADING RESULTS

Carat Weight **2.69 CARATS**

Color Grade **FANCY INTENSE PINK**

Clarity Grade **VVS 2**

ADDITIONAL GRADING INFORMATION

Polish **EXCELLENT**

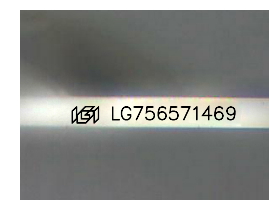
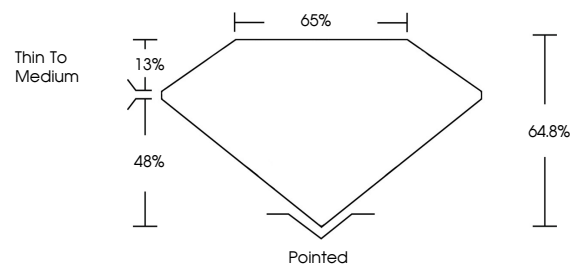
Symmetry **EXCELLENT**

Fluorescence **SLIGHT**

Inscription(s) **IGI LG756571469**

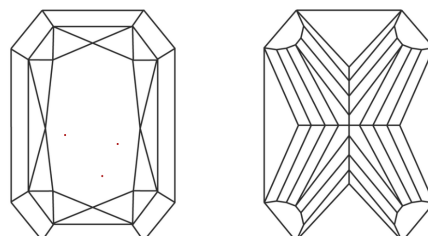
Comments: This Laboratory Grown Diamond was created by Chemical Vapor Deposition (CVD) growth process. Indications of post-growth treatment.

PROPORTIONS



Sample Image Used

CLARITY CHARACTERISTICS



KEY TO SYMBOLS

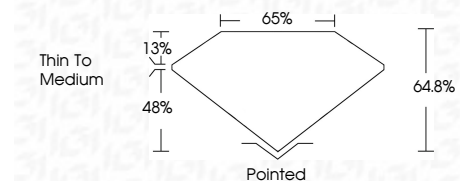
Red symbols indicate internal characteristics.
Green symbols indicate external characteristics.

COLOR

D E F G H I J Faint Very Light Light

CLARITY

FL	IF	VVS ¹⁻²	VS ¹⁻²	SI ¹⁻²	I ¹⁻³
Flawless	Internally Flawless	Very Very Slightly Included	Very Slightly Included	Slightly Included	Included



ADDITIONAL GRADING INFORMATION

Polish **EXCELLENT**

Symmetry **EXCELLENT**

Fluorescence **SLIGHT**

Inscription(s) **IGI LG756571469**

Comments: This Laboratory Grown Diamond was created by Chemical Vapor Deposition (CVD) growth process. Indications of post-growth treatment.



IGI



December 19, 2025
IGI Report No LG756571469
CUT CORNERED RECT. MODIFIED BRILLIANT
9.94 X 6.84 X 4.43 MM
2.69 CARATS
FANCY INTENSE PINK
VVS 2
64.8%
65%
Thin To Medium
Pointed
EXCELLENT
EXCELLENT
SLIGHT
IGI LG756571469
Comments: This Laboratory Grown Diamond was created by Chemical Vapor Deposition (CVD) growth process. Indications of post-growth treatment.