

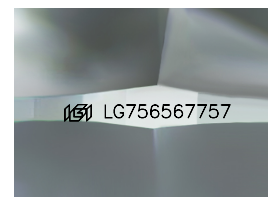
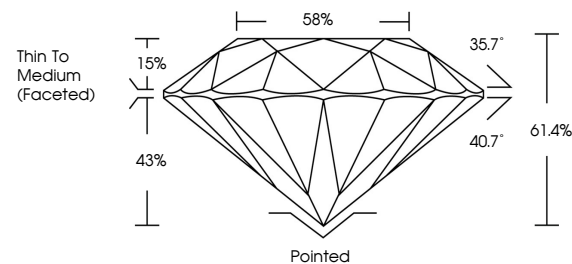


ELECTRONIC COPY

LABORATORY GROWN DIAMOND REPORT

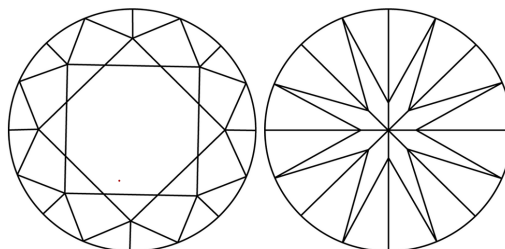
LG756567757
Report verification at igi.org

PROPORTIONS



Sample Image Used

CLARITY CHARACTERISTICS



KEY TO SYMBOLS

Red symbols indicate internal characteristics.
Green symbols indicate external characteristics.

COLOR

D E F G H I J Faint Very Light Light

CLARITY

FL	IF	VVS ¹⁻²	VS ¹⁻²	SI ¹⁻²	I ¹⁻³
Flawless	Internally Flawless	Very Very Slightly Included	Very Slightly Included	Slightly Included	Included

LABORATORY GROWN DIAMOND REPORT



December 15, 2025

IGI Report Number **LG756567757**Description **LABORATORY GROWN DIAMOND**Shape and Cutting Style **ROUND BRILLIANT**

Measurements 6.54 - 6.58 X 4.02 MM

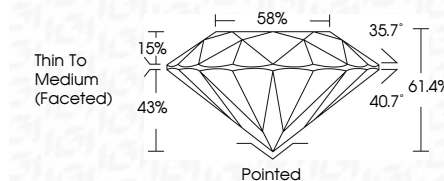
GRADING RESULTS

Carat Weight 1.05 CARAT

Color Grade D

Clarity Grade **VS 2**

Cut Grade **IDEAL**



ADDITIONAL GRADING INFORMATION

Polish EXCELLENT

Symmetry **EXCELLENT**Fluorescence **NONE**Inscription(s) LG756567757

Comments: This Laboratory Grown Diamond was created by Chemical Vapor Deposition (CVD) growth process.
Type IIa



© IGI 2020, International Gemological Institute

FD - 10 20



THIS DOCUMENT WAS PRODUCED WITH THE FOLLOWING SECURITY MEASURES: SPECIAL DOCUMENT PAPER, INK SCREENS, WATERMARK, BACKGROUND DESIGNS, HOLOGRAM AND OTHER SECURITY FEATURES NOT LISTED AND DO EXCEED DOCUMENT SECURITY INDUSTRY GUIDELINES

www.igi.org

December 15, 2025
IGI Report No LG756567757
ROUND BRILLIANT

Carat Weight	1.05 CARAT
Color Grade	D
Clarity Grade	VVS 2
Cut Grade	IDEAL
Depth	61.4%
Table	56%
Girdle	Thin To Medium (faceted)
Culet	Pointed
Polish	EXCELLENT
Symmetry	EXCELLENT
Fluorescence	NONE
Report #	1C75652752

Comments:
This Laboratory Grown Diamond was created by Chemical Vapor Deposition (CVD) growth process.