



ELECTRONIC COPY

LABORATORY GROWN DIAMOND REPORT

LG756564424
Report verification at igi.org

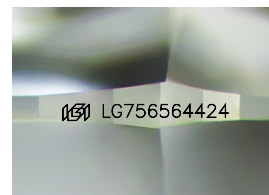
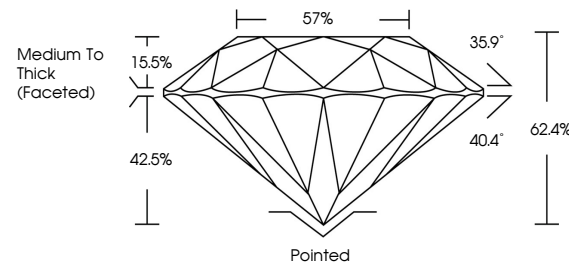
December 12, 2025	
IGI Report Number	LG756564424
Description	LABORATORY GROWN DIAMOND
Shape and Cutting Style	ROUND BRILLIANT
Measurements	8.57 - 8.65 X 5.37 MM
GRADING RESULTS	
Carat Weight	2.50 CARATS
Color Grade	F
Clarity Grade	VS 1
Cut Grade	VERY GOOD

ADDITIONAL GRADING INFORMATION

Polish	VERY GOOD
Symmetry	EXCELLENT
Fluorescence	NONE
Inscription(s)	151 LG756564424

Comments: This Laboratory Grown Diamond was created by Chemical Vapor Deposition (CVD) growth process.
Type IIa

PROPORTIONS



Sample Image Used

COLOR

D E F G H I J Faint Very Light Light

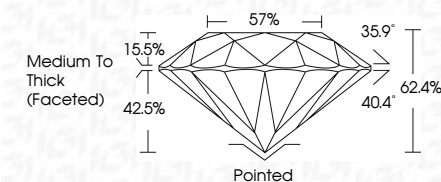
CLARITY

FL	IF	VVS ¹⁻²	VS ¹⁻²	SI ¹⁻²	I ¹⁻³
Flawless	Internally Flawless	Very Very Slightly Included	Very Slightly Included	Slightly Included	Included

LABORATORY GROWN DIAMOND REPORT



December 12, 2025	
IGI Report Number	LG75656442A
Description	LABORATORY GROWN DIAMOND
Shape and Cutting Style	ROUND BRILLIANT
Measurements	8.57 - 8.65 X 5.37 MM
GRADING RESULTS	
Carat Weight	2.50 CARATS
Color Grade	F
Clarity Grade	VS 1
Cut Grade	VERY GOOD



ADDITIONAL GRADING INFORMATION

Polish	VERY GOOD
Symmetry	EXCELLENT
Fluorescence	NONE
Inscription(s)	(G) LG756564424
<p>Comments: This Laboratory Grown Diamond was created by Chemical Vapor Deposition (CVD) growth process.</p> <p>Type IIa</p>	



© IGI 2020, International Gemological Institute

FD - 10 20



THIS DOCUMENT WAS PRODUCED WITH THE FOLLOWING SECURITY MEASURES: SPECIAL DOCUMENT PAPER, INK SCREENS, WATERMARK, BACKGROUND DESIGNS, HOLOGRAM, AND OTHER SECURITY FEATURES NOT LISTED AND DO EXCEED DOCUMENT SECURITY INDUSTRY GUIDELINES.

www.igi.org

December 12, 2025
 IGI Report No LG756564424
 ROUND BRILLIANT

0.57 - 8.65 X 5.37 MM	2.50 CARATS F
Carat Weight	VSI
Color Grade	VERY GOOD
Clarity Grade	62.4%
Cut Grade	57%
Depth	Medium to Thick (Faceted)
Table	Pointed
Girdle	VERY GOOD
Culet	EXCELLENT
Polish	NONE
Symmetry	Excellent
Fluorescence	None
Comments:	Identical to lot #1275456494.

Comments:
This Laboratory Grown Diamond was
created by Chemical Vapor Deposition
(CVD) growth process.