



ELECTRONIC COPY

LABORATORY GROWN DIAMOND REPORT

LG756564184
Report verification at igi.org

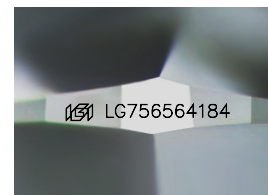
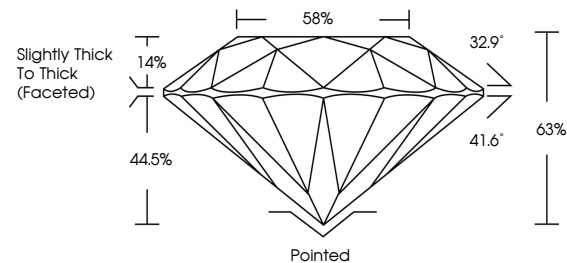
December 15, 2025	
IGI Report Number	LG756564184
Description	LABORATORY GROWN DIAMOND
Shape and Cutting Style	ROUND BRILLIANT
Measurements	8.58 - 8.65 X 5.42 MM
GRADING RESULTS	
Carat Weight	2.50 CARATS
Color Grade	E
Clarity Grade	VVS 2
Cut Grade	VERY GOOD

ADDITIONAL GRADING INFORMATION

Polish	EXCELLENT
Symmetry	EXCELLENT
Fluorescence	NONE
Inscription(s)	 LG756564184

Comments: This Laboratory Grown Diamond was created by Chemical Vapor Deposition (CVD) growth process.
Type IIa

PROPORTIONS



Sample Image Used

COLOR

D E F G H I J Faint Very Light Light

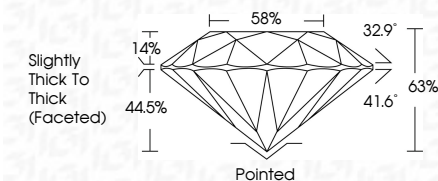
CLARITY

FL	IF	VVS ¹⁻²	VS ¹⁻²	SI ¹⁻²	I ¹⁻³
Flawless	Internally Flawless	Very Very Slightly Included	Very Slightly Included	Slightly Included	Included

LABORATORY GROWN DIAMOND REPORT



December 15, 2025	
IGI Report Number	LG756564184
Description	LABORATORY GROWN DIAMOND
Shape and Cutting Style	ROUND BRILLIANT
Measurements	8.58 - 8.65 X 5.42 MM
GRADING RESULTS	
Carat Weight	2.50 CARATS
Color Grade	E
Clarity Grade	VVS 2
Cut Grade	VERY GOOD



ADDITIONAL GRADING INFORMATION

Polish	EXCELLENT
Symmetry	EXCELLENT
Fluorescence	NONE
Inscription(s)	 LG756564184
<p>Comments: This Laboratory Grown Diamond was created by Chemical Vapor Deposition (CVD) growth process.</p> <p>Type IIa</p>	



© IGI 2020, International Gemological Institute

FD - 10 20



THIS DOCUMENT WAS PRODUCED WITH THE FOLLOWING SECURITY MEASURES: SPECIAL DOCUMENT PAPER, INK SCREENS, WATERMARK, BACKGROUND DESIGNS, HOLOGRAM AND OTHER SECURITY FEATURES NOT LISTED AND DO EXCEED DOCUMENT SECURITY INDUSTRY GUIDELINES

www.igi.org

December 15, 2025
IGI Report No LG756564184
ROUND BRILLIANT

8.58 - 8.65 X 5.42 MM	Carat Weight	2.50 CARATS
	Color Grade	E
	Clarity Grade	VVS 2
	Cut Grade	VERY GOOD
	Depth	59%
	Table	55%
	Girdle	Slightly Thick to Thick (Faceted)
	Culet	Pointed
	Polish	EXCELLENT
	Symmetry	EXCELLENT
	Fluorescence	NONE
	Report#	49113755454154

Comments:
This Laboratory Grown Diamond was created by Chemical Vapor Deposition (CVD) growth process.