



ELECTRONIC COPY

LG756560040
Report verification at igi.org



December 24, 2025
IGI Report Number **LG756560040**
Description **LABORATORY GROWN DIAMOND**
Shape and Cutting Style **CUT CORNERED
RECTANGULAR MIXED CUT**
Measurements **7.39 X 5.28 X 3.58 MM**
GRADING RESULTS
Carat Weight **1.50 CARAT**
Color Grade **FANCY DEEP GREEN BLUE**
Clarity Grade **SI 1**

LABORATORY GROWN DIAMOND REPORT

December 24, 2025
IGI Report Number **LG756560040**
Description **LABORATORY GROWN DIAMOND**
Shape and Cutting Style **CUT CORNERED RECTANGULAR
MIXED CUT**
Measurements **7.39 X 5.28 X 3.58 MM**

GRADING RESULTS

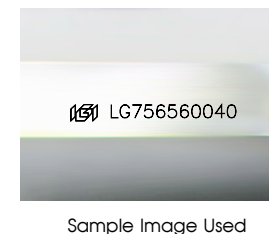
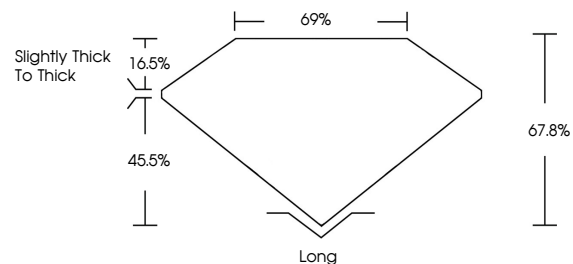
Carat Weight **1.50 CARAT**
Color Grade **FANCY DEEP GREEN BLUE**
Clarity Grade **SI 1**

ADDITIONAL GRADING INFORMATION

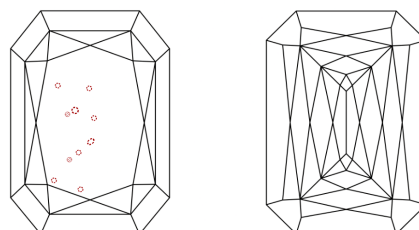
Polish **EXCELLENT**
Symmetry **EXCELLENT**
Fluorescence **NONE**
Inscription(s) **IGI LG756560040**

Comments: This Laboratory Grown Diamond was created by Chemical Vapor Deposition (CVD) growth process.
Indications of post-growth treatment.

PROPORTIONS



CLARITY CHARACTERISTICS



KEY TO SYMBOLS

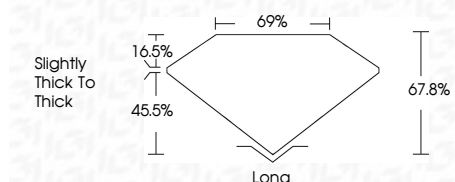
Red symbols indicate internal characteristics.
Green symbols indicate external characteristics.

COLOR

D E F G H I J Faint Very Light Light

CLARITY

FL	IF	VS ¹⁻²	VS ¹⁻²	SI ¹⁻²	I ¹⁻³
Flawless	Internally Flawless	Very Very Slightly Included	Very Slightly Included	Slightly Included	Included



ADDITIONAL GRADING INFORMATION

Polish **EXCELLENT**
Symmetry **EXCELLENT**
Fluorescence **NONE**
Inscription(s) **IGI LG756560040**
Comments: This Laboratory Grown Diamond was created by Chemical Vapor Deposition (CVD) growth process.
Indications of post-growth treatment.



December 24, 2025
IGI Report No **LG756560040**
CUT CORNERED RECT. MIXED CUT
7.39 X 5.28 X 3.58 MM
Carat Weight **1.50 CARAT**
Color Grade **FANCY DEEP GREEN BLUE**
Clarity Grade **SI 1**
Depth **45.5%**
Table **16.5%**
Girdle **Slightly Thick To Thick**
Culet **Long**
Polish **EXCELLENT**
Symmetry **EXCELLENT**
Fluorescence **NONE**
Inscription(s) **IGI LG756560040**
Comments: This Laboratory Grown Diamond was created by Chemical Vapor Deposition (CVD) growth process.
Indications of post-growth treatment.