



ELECTRONIC COPY

LG756560032
Report verification at igi.org



January 3, 2026
IGI Report Number **LG756560032**
Description **LABORATORY GROWN DIAMOND**
Shape and Cutting Style **MODIFIED PENTAGONAL MIXED CUT**
Measurements **10.43 X 12.79 X 2.21 MM**
GRADING RESULTS
Carat Weight **2.19 CARATS**
Color Grade **FANCY VIVID BLUE**
Clarity Grade **SI 1**

LABORATORY GROWN DIAMOND REPORT

January 3, 2026
IGI Report Number **LG756560032**
Description **LABORATORY GROWN DIAMOND**
Shape and Cutting Style **MODIFIED PENTAGONAL MIXED CUT**
Measurements **10.43 X 12.79 X 2.21 MM**

GRADING RESULTS

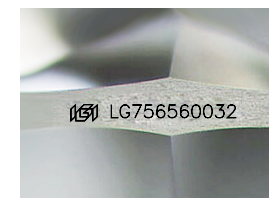
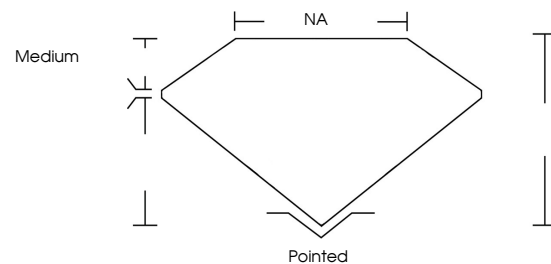
Carat Weight **2.19 CARATS**
Color Grade **FANCY VIVID BLUE**
Clarity Grade **SI 1**

ADDITIONAL GRADING INFORMATION

Polish **EXCELLENT**
Symmetry **EXCELLENT**
Fluorescence **NONE**
Inscription(s) **IGI LG756560032**

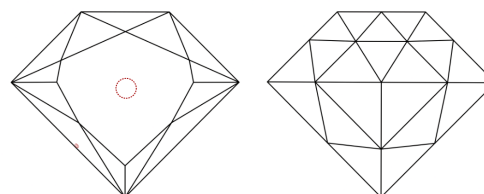
Comments: This Laboratory Grown Diamond was created by Chemical Vapor Deposition (CVD) growth process.
Indications of post-growth treatment.

PROPORTIONS



Sample Image Used

CLARITY CHARACTERISTICS



KEY TO SYMBOLS

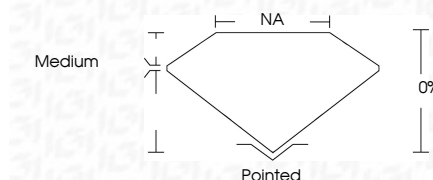
Red symbols indicate internal characteristics.
Green symbols indicate external characteristics.

COLOR

D E F G H I J Faint Very Light Light

CLARITY

FL	IF	VS ¹⁻²	VS ¹⁻²	SI ¹⁻²	I ¹⁻³
Flawless	Internally Flawless	Very Very Slightly Included	Very Slightly Included	Slightly Included	Included



ADDITIONAL GRADING INFORMATION

Polish **EXCELLENT**
Symmetry **EXCELLENT**
Fluorescence **NONE**
Inscription(s) **IGI LG756560032**
Comments: This Laboratory Grown Diamond was created by Chemical Vapor Deposition (CVD) growth process.
Indications of post-growth treatment.



IGI



January 3, 2026
IGI Report No **LG756560032**
MODIFIED PENTAGONAL MIXED CUT
10.43 X 12.79 X 2.21 MM
Carat Weight **2.19 CARATS**
Color Grade **FANCY VIVID BLUE**
Clarity Grade **SI 1**
Depth **0%**
Table **NA**
Girdle **Medium**
Culet **Pointed**
Polish **EXCELLENT**
Symmetry **EXCELLENT**
Fluorescence **NONE**
Inscription(s) **IGI LG756560032**

Comments: This Laboratory Grown Diamond was created by Chemical Vapor Deposition (CVD) growth process.
Indications of post-growth treatment.