



ELECTRONIC COPY

LG756560024
Report verification at igi.org



December 22, 2025

IGI Report Number **LG756560024**

Description **LABORATORY GROWN DIAMOND**

Shape and Cutting Style **TAPERED BAGUETTE**

Measurements **7.83 X 7.31 X 3.36 MM**

GRADING RESULTS

Carat Weight **1.93 CARAT**

Color Grade **FANCY GREEN**

Clarity Grade **VVS 2**

December 22, 2025
IGI Report Number **LG756560024**
Description **LABORATORY GROWN DIAMOND**
Shape and Cutting Style **TAPERED BAGUETTE**
Measurements **7.83 X 7.31 X 3.36 MM**

GRADING RESULTS

Carat Weight **1.93 CARAT**

Color Grade **FANCY GREEN**

Clarity Grade **VVS 2**

ADDITIONAL GRADING INFORMATION

Polish **EXCELLENT**

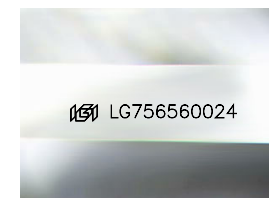
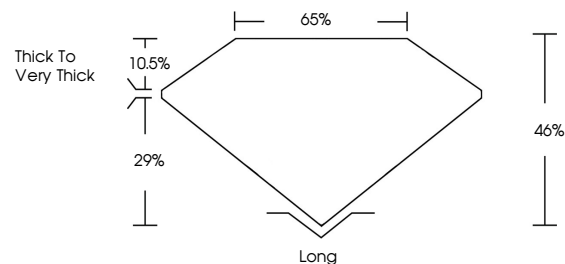
Symmetry **EXCELLENT**

Fluorescence **VERY SLIGHT**

Inscription(s) **IGI LG756560024**

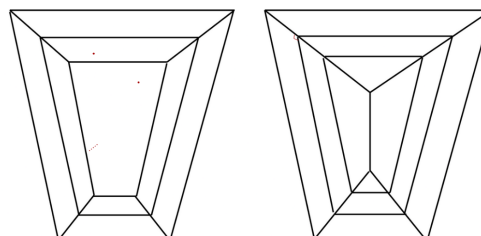
Comments: This Laboratory Grown Diamond was created by Chemical Vapor Deposition (CVD) growth process. Indications of post-growth treatment.

PROPORTIONS



Sample Image Used

CLARITY CHARACTERISTICS



KEY TO SYMBOLS

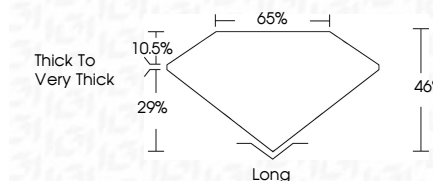
Red symbols indicate internal characteristics.
Green symbols indicate external characteristics.

COLOR

D E F G H I J Faint Very Light Light

CLARITY

FL	IF	VVS ¹⁻²	VS ¹⁻²	SI ¹⁻²	I ¹⁻³
Flawless	Internally Flawless	Very Very Slightly Included	Very Slightly Included	Slightly Included	Included



ADDITIONAL GRADING INFORMATION

Polish **EXCELLENT**

Symmetry **EXCELLENT**

Fluorescence **VERY SLIGHT**

Inscription(s) **IGI LG756560024**

Comments: This Laboratory Grown Diamond was created by Chemical Vapor Deposition (CVD) growth process. Indications of post-growth treatment.



December 22, 2025
IGI Report No LG756560024
TAPERED BAGUETTE

1.93 CARAT
FANCY GREEN
VVS 2
46%
65%

Thick to Very Thick

Long
EXCELLENT
EXCELLENT
VERY SLIGHT
IGI LG756560024

Comments: This Laboratory Grown Diamond was created by Chemical Vapor Deposition (CVD) growth process. Indications of post-growth treatment.