



**ELECTRONIC COPY**

LG756559965  
Report verification at igi.org



December 29, 2025  
IGI Report Number **LG756559965**  
Description **LABORATORY GROWN DIAMOND**  
Shape and Cutting Style **CUSHION MODIFIED BRILLIANT**  
Measurements **9.10 X 6.34 X 4.06 MM**  
**GRADING RESULTS**  
Carat Weight **1.80 CARAT**  
Color Grade **FANCY INTENSE BROWNISH PINK**  
Clarity Grade **VS 2**

December 29, 2025  
IGI Report Number **LG756559965**  
Description **LABORATORY GROWN DIAMOND**  
Shape and Cutting Style **CUSHION MODIFIED BRILLIANT**  
Measurements **9.10 X 6.34 X 4.06 MM**

**GRADING RESULTS**

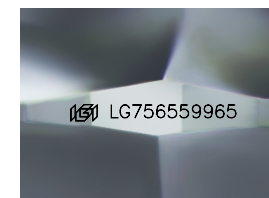
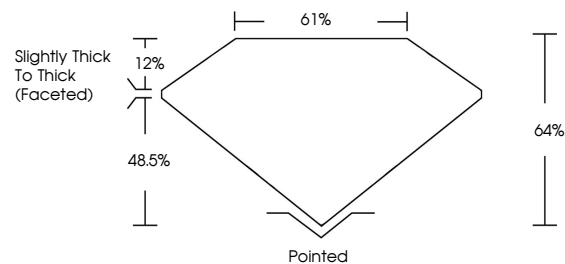
Carat Weight **1.80 CARAT**  
Color Grade **FANCY INTENSE BROWNISH PINK**  
Clarity Grade **VS 2**

**ADDITIONAL GRADING INFORMATION**

Polish **EXCELLENT**  
Symmetry **EXCELLENT**  
Fluorescence **SLIGHT**  
Inscription(s) **IGI LG756559965**

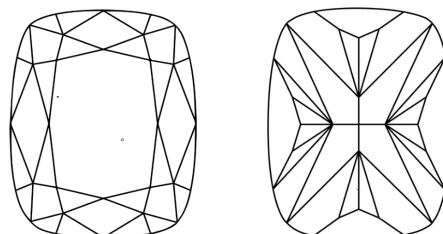
Comments: This Laboratory Grown Diamond was created by Chemical Vapor Deposition (CVD) growth process. Indications of post-growth treatment.

**PROPORTIONS**



Sample Image Used

**CLARITY CHARACTERISTICS**



**KEY TO SYMBOLS**

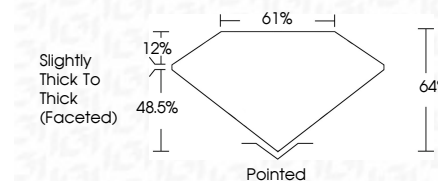
Red symbols indicate internal characteristics.  
Green symbols indicate external characteristics.

**COLOR**

D E F G H I J Faint Very Light Light

**CLARITY**

FL	IF	VS <sup>1-2</sup>	VS <sup>1-2</sup>	SI <sup>1-2</sup>	I <sup>1-3</sup>
Flawless	Internally Flawless	Very Very Slightly Included	Very Slightly Included	Slightly Included	Included



**ADDITIONAL GRADING INFORMATION**

Polish **EXCELLENT**  
Symmetry **EXCELLENT**  
Fluorescence **SLIGHT**  
Inscription(s) **IGI LG756559965**  
Comments: This Laboratory Grown Diamond was created by Chemical Vapor Deposition (CVD) growth process. Indications of post-growth treatment.



December 29, 2025  
IGI Report No LG756559965  
**CUSHION MODIFIED BRILLIANT**  
9.10 X 6.34 X 4.06 MM  
1.80 CARAT  
Color Grade **FANCY INTENSE BROWNISH PINK**  
Clarity Grade **VS 2**  
Depth **64%**  
Table **61%**  
Girdle **Slightly Thick To Thick (Faceted)**  
Culet **Pointed**  
Polish **EXCELLENT**  
Symmetry **EXCELLENT**  
Fluorescence **SLIGHT**  
Inscription(s) **IGI LG756559965**  
Comments: This Laboratory Grown Diamond was created by Chemical Vapor Deposition (CVD) growth process. Indications of post-growth treatment.