



ELECTRONIC COPY

LG756558910
Report verification at igi.org



December 27, 2025

IGI Report Number **LG756558910**

Description **LABORATORY GROWN DIAMOND**

Shape and Cutting Style **EMERALD CUT**

Measurements **14.26 X 9.41 X 6.01 MM**

GRADING RESULTS

Carat Weight **8.09 CARATS**

Color Grade **F**

Clarity Grade **VVS 2**

December 27, 2025
IGI Report Number **LG756558910**
Description **LABORATORY GROWN DIAMOND**
Shape and Cutting Style **EMERALD CUT**
Measurements **14.26 X 9.41 X 6.01 MM**

GRADING RESULTS

Carat Weight **8.09 CARATS**

Color Grade **F**

Clarity Grade **VVS 2**

ADDITIONAL GRADING INFORMATION

Polish **EXCELLENT**

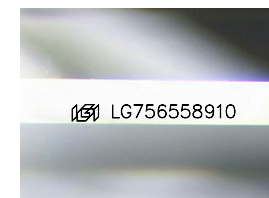
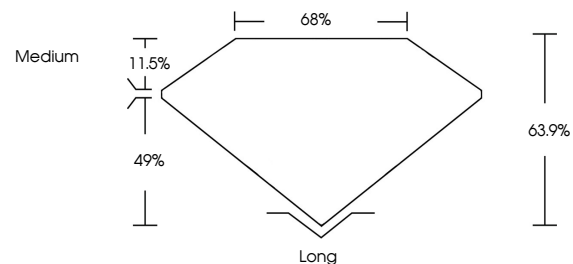
Symmetry **EXCELLENT**

Fluorescence **NONE**

Inscription(s) **IGI LG756558910**

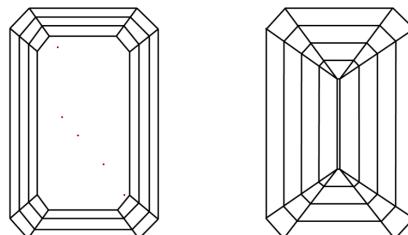
Comments: This Laboratory Grown Diamond was created by Chemical Vapor Deposition (CVD) growth process. Type IIa

PROPORTIONS



Sample Image Used

CLARITY CHARACTERISTICS



KEY TO SYMBOLS

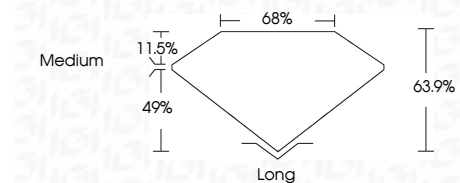
Red symbols indicate internal characteristics.
Green symbols indicate external characteristics.

COLOR

D E F G H I J Faint Very Light Light

CLARITY

FL	IF	VVS ¹⁻²	VS ¹⁻²	SI ¹⁻²	I ¹⁻³
Flawless	Internally Flawless	Very Very Slightly Included	Very Slightly Included	Slightly Included	Included



ADDITIONAL GRADING INFORMATION

Polish **EXCELLENT**

Symmetry **EXCELLENT**

Fluorescence **NONE**

Inscription(s) **IGI LG756558910**

Comments: This Laboratory Grown Diamond was created by Chemical Vapor Deposition (CVD) growth process. Type IIa



IGI



December 27, 2025
IGI Report No LG756558910
EMERALD CUT

8.09 CARATS
F

14.26 X 9.41 X 6.01 MM

Carat Weight
Color Grade
Clarity Grade
Depth
Table
Girdle
Medium

VVS 2
63.9%
65%

Long
EXCELLENT
EXCELLENT
NONE
IGI LG756558910

Culet
Polish
Symmetry
Fluorescence
Inscription(s)

Comments: This Laboratory Grown Diamond was created by Chemical Vapor Deposition (CVD) growth process. Type IIa