



**ELECTRONIC COPY**

LG756558651  
Report verification at igi.org



December 26, 2025  
IGI Report Number **LG756558651**  
Description **LABORATORY GROWN DIAMOND**  
Shape and Cutting Style **CUSHION MODIFIED BRILLIANT**  
Measurements **12.02 X 9.23 X 6.42 MM**  
**GRADING RESULTS**  
Carat Weight **6.33 CARATS**  
Color Grade **FANCY VIVID YELLOW**  
Clarity Grade **VS 2**

December 26, 2025  
IGI Report Number **LG756558651**  
Description **LABORATORY GROWN DIAMOND**  
Shape and Cutting Style **CUSHION MODIFIED BRILLIANT**  
Measurements **12.02 X 9.23 X 6.42 MM**

**GRADING RESULTS**

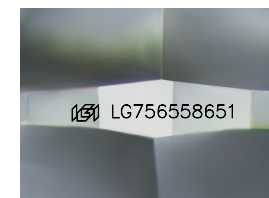
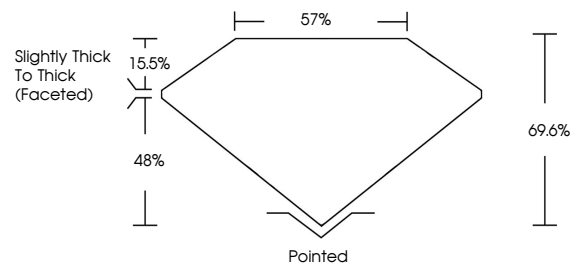
Carat Weight **6.33 CARATS**  
Color Grade **FANCY VIVID YELLOW**  
Clarity Grade **VS 2**

**ADDITIONAL GRADING INFORMATION**

Polish **EXCELLENT**  
Symmetry **EXCELLENT**  
Fluorescence **NONE**  
Inscription(s) **IGI LG756558651**

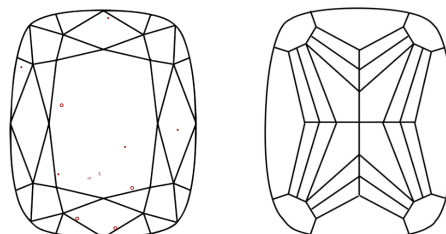
Comments: This Laboratory Grown Diamond was created by Chemical Vapor Deposition (CVD) growth process.

**PROPORTIONS**



Sample Image Used

**CLARITY CHARACTERISTICS**



**KEY TO SYMBOLS**

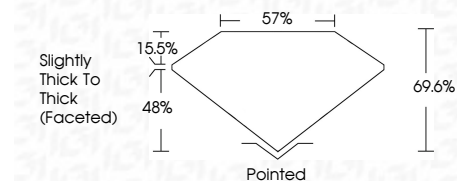
Red symbols indicate internal characteristics.  
Green symbols indicate external characteristics.

**COLOR**

D E F G H I J Faint Very Light Light

**CLARITY**

FL	IF	VS <sup>1-2</sup>	VS <sup>1-2</sup>	SI <sup>1-2</sup>	I <sup>1-3</sup>
Flawless	Internally Flawless	Very Very Slightly Included	Very Slightly Included	Slightly Included	Included



**ADDITIONAL GRADING INFORMATION**

Polish **EXCELLENT**  
Symmetry **EXCELLENT**  
Fluorescence **NONE**  
Inscription(s) **IGI LG756558651**  
Comments: This Laboratory Grown Diamond was created by Chemical Vapor Deposition (CVD) growth process.



December 26, 2025  
IGI Report No LG756558651  
**CUSHION MODIFIED BRILLIANT**  
12.02 X 9.23 X 6.42 MM  
6.33 CARATS  
FANCY VIVID YELLOW  
VS 2  
69.6%  
57%  
Slightly Thick To Thick (Faceted)  
Pointed  
EXCELLENT  
EXCELLENT  
NONE  
IGI LG756558651  
Comments: This Laboratory Grown Diamond was created by Chemical Vapor Deposition (CVD) growth process.