



**ELECTRONIC COPY**

LG756558352  
Report verification at igi.org



December 26, 2025  
IGI Report Number **LG756558352**  
Description **LABORATORY GROWN DIAMOND**  
Shape and Cutting Style **RECTANGULAR CUSHION MIXED CUT**  
Measurements **14.96 X 9.23 X 5.82 MM**  
**GRADING RESULTS**  
Carat Weight **8.48 CARATS**  
Color Grade **FANCY VIVID BROWN ORANGE**  
Clarity Grade **VS 1**

December 26, 2025  
IGI Report Number **LG756558352**  
Description **LABORATORY GROWN DIAMOND**  
Shape and Cutting Style **RECTANGULAR CUSHION MIXED CUT**  
Measurements **14.96 X 9.23 X 5.82 MM**

**GRADING RESULTS**

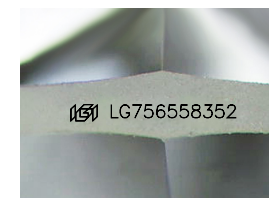
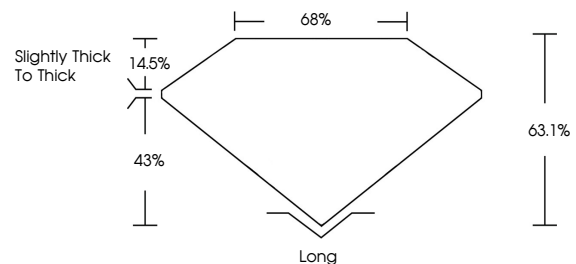
Carat Weight **8.48 CARATS**  
Color Grade **FANCY VIVID BROWN ORANGE**  
Clarity Grade **VS 1**

**ADDITIONAL GRADING INFORMATION**

Polish **EXCELLENT**  
Symmetry **EXCELLENT**  
Fluorescence **SLIGHT**  
Inscription(s) **(IGI) LG756558352**

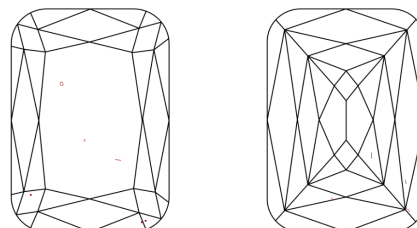
Comments: This Laboratory Grown Diamond was created by Chemical Vapor Deposition (CVD) growth process.  
Indications of post-growth treatment.

**PROPORTIONS**



Sample Image Used

**CLARITY CHARACTERISTICS**



**KEY TO SYMBOLS**

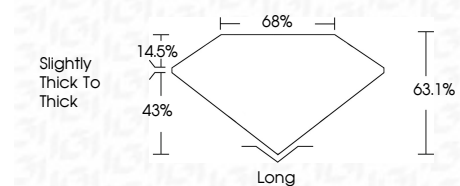
Red symbols indicate internal characteristics.  
Green symbols indicate external characteristics.

**COLOR**

D E F G H I J Faint Very Light Light

**CLARITY**

FL	IF	VS <sup>1-2</sup>	VS <sup>1-2</sup>	SI <sup>1-2</sup>	I <sup>1-3</sup>
Flawless	Internally Flawless	Very Very Slightly Included	Very Slightly Included	Slightly Included	Included



**ADDITIONAL GRADING INFORMATION**

Polish **EXCELLENT**  
Symmetry **EXCELLENT**  
Fluorescence **SLIGHT**  
Inscription(s) **(IGI) LG756558352**  
Comments: This Laboratory Grown Diamond was created by Chemical Vapor Deposition (CVD) growth process.  
Indications of post-growth treatment.



December 26, 2025  
IGI Report No LG756558352  
RECTANGULAR CUSHION MIXED CUT  
14.96 X 9.23 X 5.82 MM  
8.48 CARATS  
FANCY VIVID BROWN ORANGE  
VS 1  
63.1%  
65%  
Slightly thick to thick  
Long  
EXCELLENT  
EXCELLENT  
SLIGHT  
(IGI) LG756558352  
Comments: This Laboratory Grown Diamond was created by Chemical Vapor Deposition (CVD) growth process.  
Indications of post-growth treatment.