



ELECTRONIC COPY

LG756553833
Report verification at igi.org



December 11, 2025

IGI Report Number **LG756553833**

Description **LABORATORY GROWN DIAMOND**

Shape and Cutting Style **ROUND BRILLIANT**

Measurements **7.27 - 7.32 X 4.55 MM**

GRADING RESULTS

Carat Weight **1.50 CARAT**

Color Grade **D**

Clarity Grade **VS 1**

Cut Grade **IDEAL**

December 11, 2025

IGI Report Number **LG756553833**

Description **LABORATORY GROWN DIAMOND**

Shape and Cutting Style **ROUND BRILLIANT**

Measurements **7.27 - 7.32 X 4.55 MM**

GRADING RESULTS

Carat Weight **1.50 CARAT**

Color Grade **D**

Clarity Grade **VS 1**

Cut Grade **IDEAL**

ADDITIONAL GRADING INFORMATION

Polish **EXCELLENT**

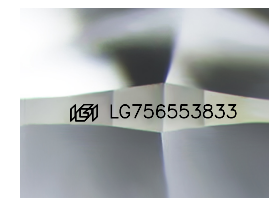
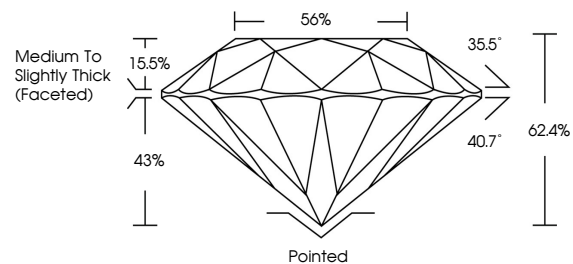
Symmetry **EXCELLENT**

Fluorescence **NONE**

Inscription(s) **LG756553833**

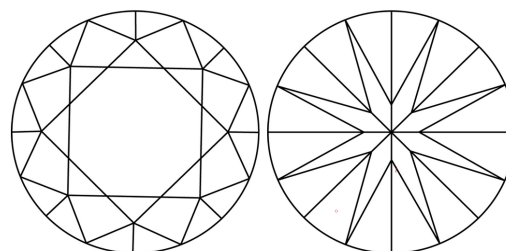
Comments: This Laboratory Grown Diamond was created by Chemical Vapor Deposition (CVD) growth process.
Type IIa

PROPORTIONS



Sample Image Used

CLARITY CHARACTERISTICS



KEY TO SYMBOLS

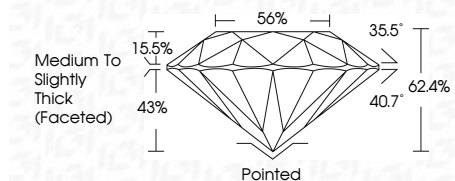
Red symbols indicate internal characteristics.
Green symbols indicate external characteristics.

COLOR

D E F G H I J Faint Very Light Light

CLARITY

FL	IF	VS ¹⁻²	VS ¹⁻²	SI ¹⁻²	I ¹⁻³
Flawless	Internally Flawless	Very Very Slightly Included	Very Slightly Included	Slightly Included	Included



ADDITIONAL GRADING INFORMATION

Polish **EXCELLENT**

Symmetry **EXCELLENT**

Fluorescence **NONE**

Inscription(s) **LG756553833**

Comments: This Laboratory Grown Diamond was created by Chemical Vapor Deposition (CVD) growth process.
Type IIa



IGI



December 11, 2025
IGI Report No LG756553833
ROUND BRILLIANT

1.50 CARAT
D

Carat Weight
Color Grade
Clarity Grade
Cut Grade
Depth
Table
Girdle

15.5%
43%
56%
35.5°
40.7°
62.4%

Medium To Slightly Thick (Faceted)

Pointed
EXCELLENT
EXCELLENT
NONE

Polish
Symmetry
Fluorescence
Inscription(s)

LG756553833

Comments: This Laboratory Grown Diamond was created by Chemical Vapor Deposition (CVD) growth process.
Type IIa