



ELECTRONIC COPY

LG756553777
Report verification at igi.org



December 17, 2025
IGI Report Number **LG756553777**
Description **LABORATORY GROWN DIAMOND**
Shape and Cutting Style **CUT CORNERED
RECTANGULAR MIXED CUT**
Measurements **7.40 X 5.61 X 4.04 MM**
GRADING RESULTS
Carat Weight **1.64 CARAT**
Color Grade **FANCY VIVID PINK**
Clarity Grade **VVS 2**

December 17, 2025
IGI Report Number **LG756553777**
Description **LABORATORY GROWN DIAMOND**
Shape and Cutting Style **CUT CORNERED RECTANGULAR
MIXED CUT**
Measurements **7.40 X 5.61 X 4.04 MM**

GRADING RESULTS

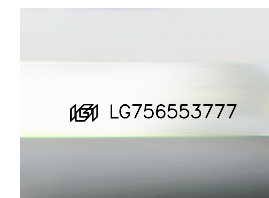
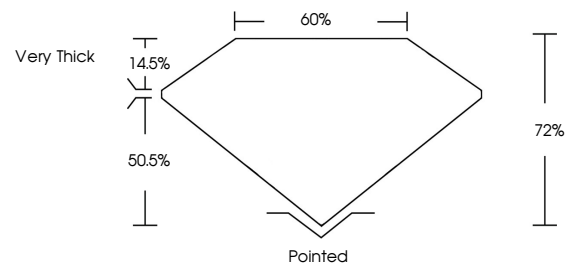
Carat Weight **1.64 CARAT**
Color Grade **FANCY VIVID PINK**
Clarity Grade **VVS 2**

ADDITIONAL GRADING INFORMATION

Polish **EXCELLENT**
Symmetry **EXCELLENT**
Fluorescence **STRONG**
Inscription(s) **IGI LG756553777**

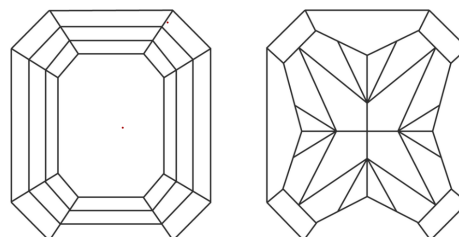
Comments: This Laboratory Grown Diamond was created by Chemical Vapor Deposition (CVD) growth process.

PROPORTIONS



Sample Image Used

CLARITY CHARACTERISTICS



KEY TO SYMBOLS

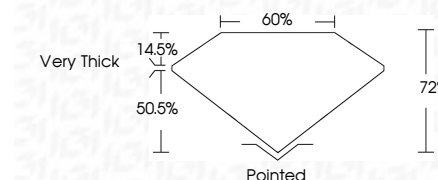
Red symbols indicate internal characteristics.
Green symbols indicate external characteristics.

COLOR

D E F G H I J Faint Very Light Light

CLARITY

FL	IF	VVS ¹⁻²	VS ¹⁻²	SI ¹⁻²	I ¹⁻³
Flawless	Internally Flawless	Very Very Slightly Included	Very Slightly Included	Slightly Included	Included



ADDITIONAL GRADING INFORMATION

Polish **EXCELLENT**
Symmetry **EXCELLENT**
Fluorescence **STRONG**
Inscription(s) **IGI LG756553777**
Comments: This Laboratory Grown Diamond was created by Chemical Vapor Deposition (CVD) growth process.



December 17, 2025
IGI Report No **LG756553777**
CUT CORNERED RECT. MIXED CUT
7.40 X 5.61 X 4.04 MM
Carat Weight **1.64 CARAT**
Color Grade **FANCY VIVID PINK**
Clarity Grade **VVS 2**
Depth **72%**
Table **60%**
Girdle **Very Thick**
Culet **Pointed**
Polish **EXCELLENT**
Symmetry **EXCELLENT**
Fluorescence **STRONG**
Inscription(s) **IGI LG756553777**
Comments: This Laboratory Grown Diamond was created by Chemical Vapor Deposition (CVD) growth process.