



**INTERNATIONAL  
GEMOLOGICAL  
INSTITUTE**

**ELECTRONIC COPY**



January 5, 2026

IGI Report Number **LG756552211**

**ROUND BRILLIANT**

**LABORATORY GROWN DIAMOND**

**5.64 - 5.73 X 3.53 MM**

Carat Weight **0.73 CARAT**

Color Grade **FANCY VIVID PINK**

Clarity Grade **VS 1**

Cut Grade **VERY GOOD**

Polish **VERY GOOD**

Symmetry **VERY GOOD**

Fluorescence **STRONG**

Inscription(s) **IGI LG756552211**

Comments: This Laboratory Grown Diamond was created by Chemical Vapor Deposition (CVD) growth process. Indications of post-growth treatment.

**LABORATORY GROWN DIAMOND REPORT**

January 5, 2026

IGI Report Number

**LG756552211**

Description

**LABORATORY GROWN DIAMOND**

Shape and Cutting Style

**ROUND BRILLIANT**

Measurements

**5.64 - 5.73 X 3.53 MM**

**GRADING RESULTS**

Carat Weight

**0.73 CARAT**

Color Grade

**FANCY VIVID PINK**

Clarity Grade

**VS 1**

Cut Grade

**VERY GOOD**

**ADDITIONAL GRADING INFORMATION**

Polish

**VERY GOOD**

Symmetry

**VERY GOOD**

Fluorescence

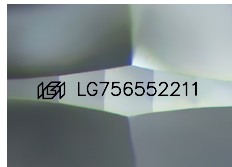
**STRONG**

Inscription(s)

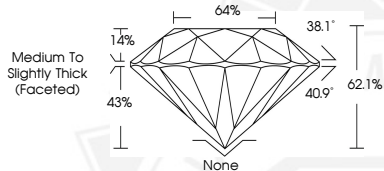
**IGI LG756552211**

Comments: This Laboratory Grown Diamond was created by Chemical Vapor Deposition (CVD) growth process.

Indications of post-growth treatment.



Sample Image Used



January 5, 2026

IGI Report Number **LG756552211**

**ROUND BRILLIANT**

**LABORATORY GROWN DIAMOND**

**5.64 - 5.73 X 3.53 MM**

Carat Weight **0.73 CARAT**

Color Grade **FANCY VIVID PINK**

Clarity Grade **VS 1**

Cut Grade **VERY GOOD**

Polish **VERY GOOD**

Symmetry **VERY GOOD**

Fluorescence **STRONG**

Inscription(s) **IGI LG756552211**

Comments: This Laboratory Grown Diamond was created by Chemical Vapor Deposition (CVD) growth process. Indications of post-growth treatment.



THIS DOCUMENT WAS PRODUCED WITH THE FOLLOWING SECURITY MEASURES: SPECIAL DOCUMENT PAPER, INK SCREENS, WATERMARK, BACKGROUND DESIGNS, HOLOGRAM AND OTHER SECURITY FEATURES NOT LISTED AND DO EXCEED DOCUMENT SECURITY INDUSTRY GUIDELINES.

For terms & conditions and to verify this report, please visit [www.igi.org](http://www.igi.org)