



January 5, 2026

IGI Report Number LG756552210
ROUND BRILLIANT
LABORATORY GROWN DIAMOND
5.73 - 5.82 X 3.52 MM

Carat Weight 0.74 CARAT
Color Grade FANCY VIVID PINK
Clarity Grade VVS 2
Cut Grade EXCELLENT
Polish VERY GOOD
Symmetry VERY GOOD
Fluorescence STRONG
Inscription(s) IGI LG756552210

Comments: This Laboratory Grown Diamond was created by Chemical Vapor Deposition (CVD) growth process. Indications of post-growth treatment.

LABORATORY GROWN DIAMOND REPORT

January 5, 2026
IGI Report Number **LG756552210**
Description **LABORATORY GROWN DIAMOND**
Shape and Cutting Style **ROUND BRILLIANT**
Measurements **5.73 - 5.82 X 3.52 MM**

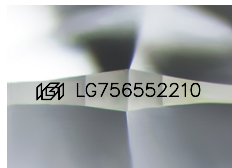
GRADING RESULTS

Carat Weight 0.74 CARAT
Color Grade FANCY VIVID PINK
Clarity Grade VVS 2
Cut Grade EXCELLENT

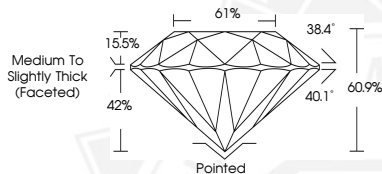
ADDITIONAL GRADING INFORMATION

Polish VERY GOOD
Symmetry VERY GOOD
Fluorescence STRONG
Inscription(s) IGI LG756552210

Comments: This Laboratory Grown Diamond was created by Chemical Vapor Deposition (CVD) growth process. Indications of post-growth treatment.



Sample Image Used



January 5, 2026

IGI Report Number LG756552210
ROUND BRILLIANT
LABORATORY GROWN DIAMOND
5.73 - 5.82 X 3.52 MM

Carat Weight 0.74 CARAT
Color Grade FANCY VIVID PINK
Clarity Grade VVS 2
Cut Grade EXCELLENT
Polish VERY GOOD
Symmetry VERY GOOD
Fluorescence STRONG
Inscription(s) IGI LG756552210

Comments: This Laboratory Grown Diamond was created by Chemical Vapor Deposition (CVD) growth process. Indications of post-growth treatment.



THIS DOCUMENT WAS PRODUCED WITH THE FOLLOWING SECURITY MEASURES: SPECIAL DOCUMENT PAPER, INK SCREENS, WATERMARK, BACKGROUND DESIGNS, HOLOGRAM AND OTHER SECURITY FEATURES NOT LISTED AND DO EXCEED DOCUMENT SECURITY INDUSTRY GUIDELINES.