



December 14, 2025

IGI Report Number **LG756549029**

TRIANGULAR STEP CUT

LABORATORY GROWN DIAMOND

7.46 X 5.63 X 3.02 MM

Carat Weight **0.62 CARAT**

Color Grade **E**

Clarity Grade **VVS 2**

Polish **EXCELLENT**

Symmetry **EXCELLENT**

Fluorescence **NONE**

Inscription(s) **IGI LG756549029**

Comments: This Laboratory Grown Diamond was created by Chemical Vapor Deposition (CVD) growth process. Type IIa

**LABORATORY GROWN DIAMOND REPORT**

December 14, 2025

IGI Report Number

**LG756549029**

Description

**LABORATORY GROWN DIAMOND**

Shape and Cutting Style

**TRIANGULAR STEP CUT**

Measurements

**7.46 X 5.63 X 3.02 MM**

**GRADING RESULTS**

Carat Weight

**0.62 CARAT**

Color Grade

**E**

Clarity Grade

**VVS 2**

**ADDITIONAL GRADING INFORMATION**

Polish

**EXCELLENT**

Symmetry

**EXCELLENT**

Fluorescence

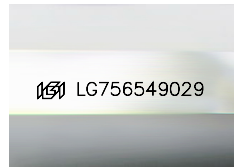
**NONE**

Inscription(s)

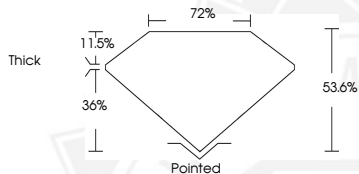
**IGI LG756549029**

Comments: This Laboratory Grown Diamond was created by Chemical Vapor Deposition (CVD) growth process.

Type IIa



Sample Image Used



December 14, 2025

IGI Report Number **LG756549029**

TRIANGULAR STEP CUT

LABORATORY GROWN DIAMOND

7.46 X 5.63 X 3.02 MM

Carat Weight **0.62 CARAT**

Color Grade **E**

Clarity Grade **VVS 2**

Polish **EXCELLENT**

Symmetry **EXCELLENT**

Fluorescence **NONE**

Inscription(s) **IGI LG756549029**

Comments: This Laboratory Grown Diamond was created by Chemical Vapor Deposition (CVD) growth process. Type IIa



THIS DOCUMENT WAS PRODUCED WITH THE FOLLOWING SECURITY MEASURES: SPECIAL DOCUMENT PAPER, INK SCREENS, WATERMARK, BACKGROUND DESIGNS, HOLOGRAM AND OTHER SECURITY FEATURES NOT LISTED AND DO EXCEED DOCUMENT SECURITY INDUSTRY GUIDELINES.