

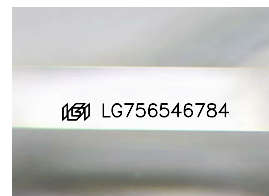
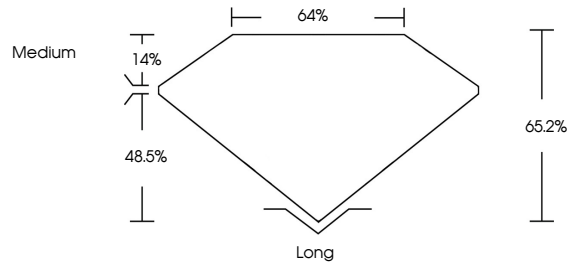


**INTERNATIONAL
GEMOLOGICAL
INSTITUTE**

ELECTRONIC COPY

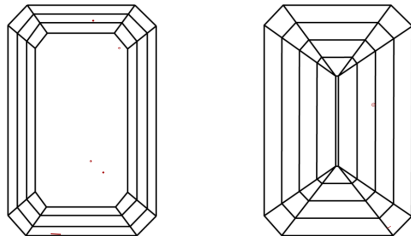
LG756546784
Report verification at igi.org

PROPORTIONS



Sample Image Used

CLARITY CHARACTERISTICS



KEY TO SYMBOLS

Red symbols indicate internal characteristics.
Green symbols indicate external characteristics.

COLOR

D E F G H I J Faint Very Light Light

CLARITY

FL	IF	VVS ¹⁻²	VS ¹⁻²	SI ¹⁻²	I ¹⁻³
Flawless	Internally Flawless	Very Very Slightly Included	Very Slightly Included	Slightly Included	Included

LABORATORY GROWN DIAMOND REPORT



December 18, 2025

IGI Report Number **LG756546784**

Description	LABORATORY GROWN DIAMOND
-------------	--------------------------

Shape and Cutting Style **EMERALD CUT**

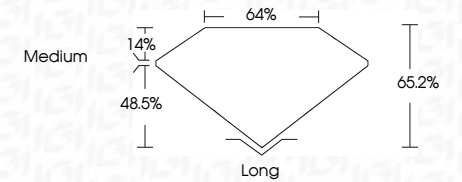
Measurements	11.95 X 8.14 X 5.31 MM
--------------	------------------------

GRADING RESULTS

Carat Weight **5.01 CARATS**

Color Grade	F
-------------	---

Clarity Grade **VS 1**



ADDITIONAL GRADING INFORMATION

Polish **EXCELLENT**Symmetry **EXCELLENT**Fluorescence **NONE**Inscription(s)  LG756546784

Comments: This Laboratory Grown Diamond was created by Chemical Vapor Deposition (CVD) growth process.
Type IIa



IGI

www.igi.org

© IGI 2020, International Gemological Institute

FD - 10 20



THIS DOCUMENT WAS PRODUCED WITH THE FOLLOWING SECURITY MEASURES: SPECIAL DOCUMENT PAPER, INK SCREENS, WATERMARK BACKGROUND DESIGNS, HOLOGRAM AND OTHER SECURITY FEATURES NOT LISTED AND DO EXCEED DOCUMENT SECURITY INDUSTRY GUIDELINES.

December 18, 2025
IGI Report No LG756546784
EMERALD CUT

11.96 X 8.14 X 5.31 MM	5.01 CARATS	F
Color Weight	VS 1	Long
Color Grade	65.2%	EXCELLENT
Clarity Grade	64%	EXCELLENT
Depth	Medium	NONE
Table		1691 13765656784
Girdle		
Culet		
Polish		
Symmetry		
Fluorescence		
Inscription(s)		

Comments:
This Laboratory Grown Diamond was created by Chemical Vapor Deposition (CVD) growth process.
Type IIa