

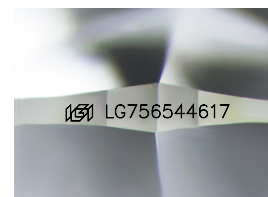
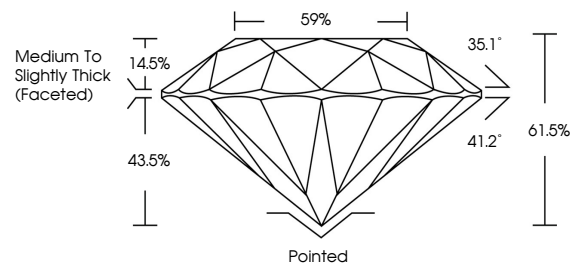


ELECTRONIC COPY

LABORATORY GROWN DIAMOND REPORT

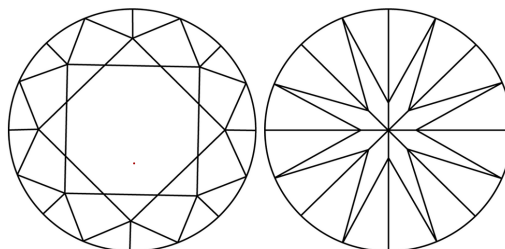
LG756544617
Report verification at igi.org

PROPORTIONS



Sample Image Used

CLARITY CHARACTERISTICS



KEY TO SYMBOLS

Red symbols indicate internal characteristics.
Green symbols indicate external characteristics.

COLOR

D E F G H I J Faint Very Light Light

CLARITY

FL	IF	VVS ¹⁻²	VS ¹⁻²	SI ¹⁻²	I ¹⁻³
Flawless	Internally Flawless	Very Very Slightly Included	Very Slightly Included	Slightly Included	Included

LABORATORY GROWN DIAMOND REPORT



December 11, 2025

IGI Report Number **LG756544617**Description **LABORATORY GROWN DIAMOND**Shape and Cutting Style **ROUND BRILLIANT**

Measurements 8.11 - 8.15 X 5.00 MM

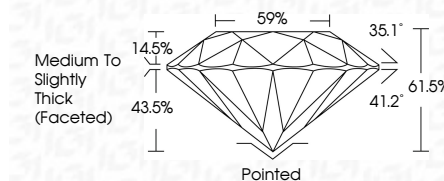
GRADING RESULTS

Carat Weight **2.03 CARATS**

Color Grade F

Clarity Grade **VS 2**

Cut Grade **IDEAL**



ADDITIONAL GRADING INFORMATION

Polish **EXCELLENT**Symmetry **EXCELLENT**Fluorescence **NONE**Inscription(s) LG756544617

Comments: This Laboratory Grown Diamond was created by Chemical Vapor Deposition (CVD) growth process.
Type IIa



© IGI 2020, International Gemological Institute

FD - 10 20

www.igi.org



THIS DOCUMENT WAS PRODUCED WITH THE FOLLOWING SECURITY MEASURES: SPECIAL DOCUMENT PAPER, INK SCREENS, WATERMARK, BACKGROUND DESIGNS, HOLOGRAM AND OTHER SECURITY FEATURES NOT LISTED AND DO EXCEED DOCUMENT SECURITY INDUSTRY GUIDELINE

December 11, 2025
IGI Report No LG756544617
ROUND BRILLIANT

18.11 - 8.15 X 5.00 MM	Carat Weight	2.08 CARATS
	Color Grade	F
	Clarity Grade	VVS 2
	Cut Grade	IDEAL
	Depth	61.65%
	Table	59%
	Girdle	Medium to Slightly Thick (Faceted)
	Culet	Pointed
	Polish	EXCELLENT
	Symmetry	EXCELLENT
	Fluorescence	NONE
	Report No.	60112756546417

Comments:
This Laboratory Grown Diamond was created by Chemical Vapor Deposition (CVD) growth process.