



ELECTRONIC COPY

LG756544384
Report verification at igi.org



December 18, 2025
IGI Report Number **LG756544384**
Description **LABORATORY GROWN DIAMOND**
Shape and Cutting Style **CUSHION MODIFIED BRILLIANT**
Measurements **7.32 X 5.74 X 3.91 MM**
GRADING RESULTS
Carat Weight **1.41 CARAT**
Color Grade **FANCY INTENSE YELLOW**
Clarity Grade **VVS 2**

December 18, 2025
IGI Report Number **LG756544384**
Description **LABORATORY GROWN DIAMOND**
Shape and Cutting Style **CUSHION MODIFIED BRILLIANT**
Measurements **7.32 X 5.74 X 3.91 MM**

GRADING RESULTS

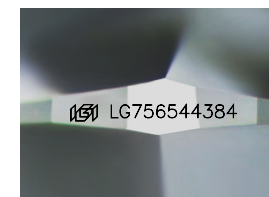
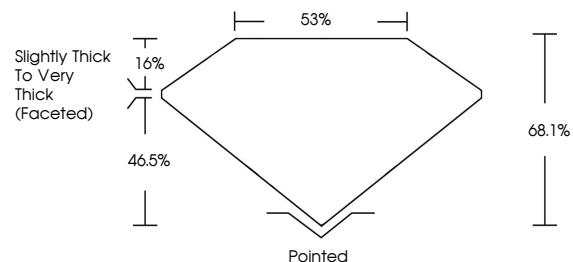
Carat Weight **1.41 CARAT**
Color Grade **FANCY INTENSE YELLOW**
Clarity Grade **VVS 2**

ADDITIONAL GRADING INFORMATION

Polish **EXCELLENT**
Symmetry **EXCELLENT**
Fluorescence **NONE**
Inscription(s) **IGI LG756544384**

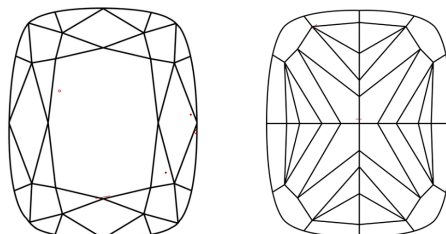
Comments: This Laboratory Grown Diamond was created by Chemical Vapor Deposition (CVD) growth process.

PROPORTIONS



Sample Image Used

CLARITY CHARACTERISTICS



KEY TO SYMBOLS

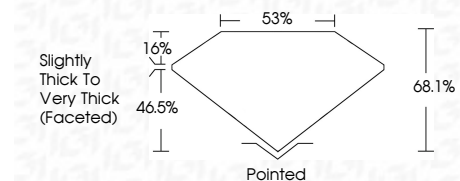
Red symbols indicate internal characteristics.
Green symbols indicate external characteristics.

COLOR

D E F G H I J Faint Very Light Light

CLARITY

FL	IF	VVS ¹⁻²	VS ¹⁻²	SI ¹⁻²	I ¹⁻³
Flawless	Internally Flawless	Very Very Slightly Included	Very Slightly Included	Slightly Included	Included



ADDITIONAL GRADING INFORMATION

Polish **EXCELLENT**
Symmetry **EXCELLENT**
Fluorescence **NONE**
Inscription(s) **IGI LG756544384**
Comments: This Laboratory Grown Diamond was created by Chemical Vapor Deposition (CVD) growth process.



IGI



December 18, 2025
IGI Report No LG756544384
CUSHION MODIFIED BRILLIANT

1.41 CARAT
FANCY INTENSE YELLOW
VVS 2
68.1%
53%
Slightly Thick To Very Thick (Faceted)
Pointed
EXCELLENT
EXCELLENT
NONE
IGI LG756544384

Comments: This Laboratory Grown Diamond was created by Chemical Vapor Deposition (CVD) growth process.