



ELECTRONIC COPY

LG756544254
Report verification at igi.org

LABORATORY GROWN DIAMOND REPORT



December 15, 2025

IGI Report Number **LG756544254**Description **LABORATORY GROWN DIAMOND**Shape and Cutting Style **ROUND BRILLIANT**

Measurements 6.46 - 6.49 X 4.04 MM

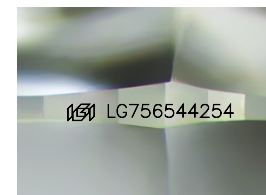
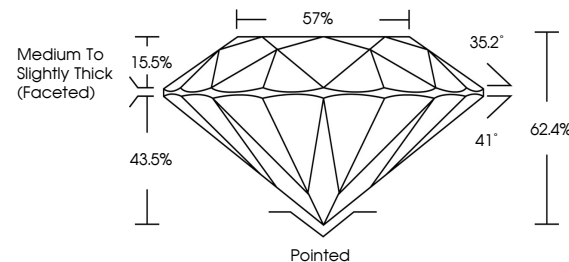
GRADING RESULTS

Carat Weight 1.05 CARAT

Color Grade D

Clarity Grade WS 2

Cut Grade **IDEAL**



Sample Image Used

COLOR

D E F G H I J Faint Very Light Light

CLARITY

FL IF VWS¹⁻² VS¹⁻² SI¹⁻² |¹⁻³

Flawless	Internally Flawless	Very Very Slightly Included	Very Slightly Included	Slightly Included	Included
----------	---------------------	-----------------------------	------------------------	-------------------	----------

ADDITIONAL GRADING INFORMATION

Polish EXCELLENT

Symmetry **EXCELLENT**Fluorescence **NONE**Inscription(s) LG756544254

Comments: This Laboratory Grown Diamond was created by Chemical Vapor Deposition (CVD) growth process.
Type IIa



© IGI 2020, International Gemmological Institute

FD - 10 20

www.igi.org



THIS DOCUMENT WAS PRODUCED WITH THE FOLLOWING SECURITY MEASURES: SPECIAL DOCUMENT PAPER, INK SCREENS, WATERMARK, BACKGROUND DESIGNS, HOLOGRAM AND OTHER SECURITY FEATURES NOT LISTED AND DO EXCEED DOCUMENT SECURITY INDUSTRY GUIDELINE

December 15, 2025
IGI Report No LG756544254
ROUND BRILLIANT

6.66 - 6.49 X 4.04 MM	Color	1.05 CARAT
	Grade	D
	Clarity	VS 2
	Cut	IDEAL
	Depth	62.4%
	Table	57%
	Girdle	Medium to Slightly Thick (Focused)
	Culet	Polished
	Polish	EXCELLENT
	Symmetry	EXCELLENT
	Fluorescence	NONE

Comments:
This Laboratory Grown Diamond was created by Chemical Vapor Deposition (CVD) growth process.