



ELECTRONIC COPY

LABORATORY GROWN DIAMOND REPORT

LG756540840
Report verification at igi.org

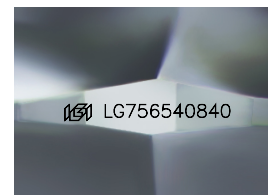
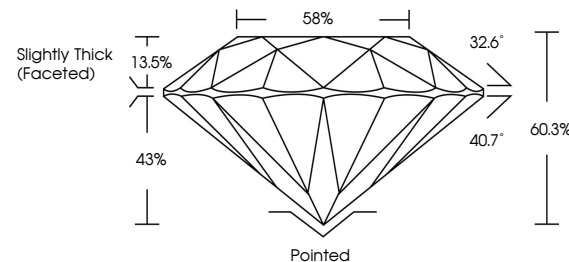
December 19, 2025	
IGI Report Number	LG756540840
Description	LABORATORY GROWN DIAMOND
Shape and Cutting Style	ROUND BRILLIANT
Measurements	8.11 - 8.16 X 4.90 MM
GRADING RESULTS	
Carat Weight	2.00 CARATS
Color Grade	E
Clarity Grade	VVS 2
Cut Grade	EXCELLENT

ADDITIONAL GRADING INFORMATION

Polish	EXCELLENT
Symmetry	EXCELLENT
Fluorescence	NONE
Inscription(s)	15 LG756540840

Comments: As Grown - No indication of post-growth treatment.
This Laboratory Grown Diamond was created by High Pressure High Temperature (HPHT) growth process.
Type II

PROPORTIONS



Sample Image Used

COLOR

D E F G H I J Faint Very Light Light

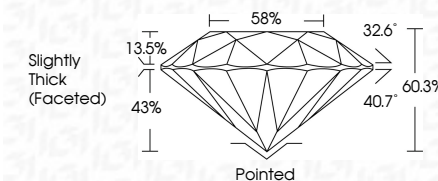
CLARITY

FL	IF	VVS ¹⁻²	VS ¹⁻²	SI ¹⁻²	I ¹⁻³
Flawless	Internally Flawless	Very Very Slightly Included	Very Slightly Included	Slightly Included	Included

LABORATORY GROWN DIAMOND REPORT



December 19, 2025	
IGI Report Number	LG756540840
Description	LABORATORY GROWN DIAMOND
Shape and Cutting Style	ROUND BRILLIANT
Measurements	8.11 - 8.16 X 4.90 MM
GRADING RESULTS	
Carat Weight	2.00 CARATS
Color Grade	E
Clarity Grade	VVS 2
Cut Grade	EXCELLENT



ADDITIONAL GRADING INFORMATION

Polish	EXCELLENT
Symmetry	EXCELLENT
Fluorescence	NONE
Inscription(s)	LG LG756540840
<p>Comments: As Grown - No indication of post-growth treatment.</p> <p>This Laboratory Grown Diamond was created by High Pressure High Temperature (HPHT) growth process.</p> <p>Type II</p>	



© IGI 2020, International Gemological Institute

FD - 10 20



THIS DOCUMENT WAS PRODUCED WITH THE FOLLOWING SECURITY MEASURES: SPECIAL DOCUMENT PAPER, INK SCREENS, WATERMARK, BACKGROUND DESIGNS, HOLOGRAM AND OTHER SECURITY FEATURES NOT LISTED AND DO EXCEED DOCUMENT SECURITY INDUSTRY GUIDELINES

www.igi.org

December 19, 2025
LGI Report No LG756540840
ROUND BRILLIANT

ROUND BRILLIANT
8.11 - 8.16 X 4.90 MM

3.11 - 8.16 X 4.90 MM
Carat Weight 2.00 CARATS

Color Grade	E
-------------	---

	WS2
Clarity Grade	

Cut Grade	EXCELLENT
Depth	60.3%

Depth	80.3%
Table	58%

Girdle

Culet	Pointed
-------	---------

Culet	Pointed
Polish	EXCELLENT

Symmetry	EXCELLENT
Glucose	NONE

Fluorescence	NONE
Inscription(s)	151 LG756540840

Comments:

Comments:
As Grown - No Indication of post-growth

This Laboratory Grown Diamond was created by L'Oréal Research & Development.

created by High Pressure High Temperature (HPHT) growth process.

Type II