



**INTERNATIONAL  
GEMOLOGICAL  
INSTITUTE**

**ELECTRONIC COPY**

LG756540412  
Report verification at [igi.org](https://igi.org)

LABORATORY GROWN DIAMOND REPORT



December 17, 2025

IGI Report Number **LG756540412**

Description	LABORATORY GROWN DIAMOND
-------------	--------------------------

Shape and Cutting Style **CUSHION MODIFIED  
BRILLIANT**

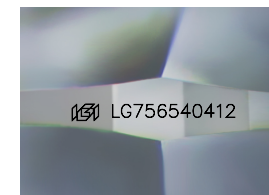
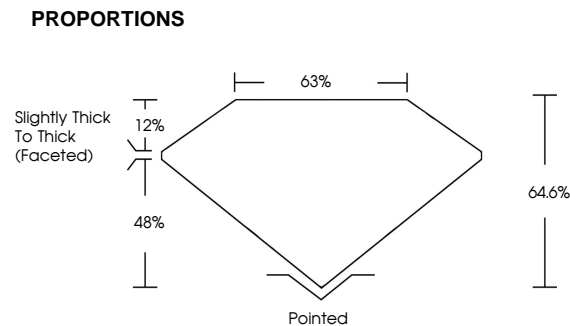
Measurements 7.06 X 5.13 X 3.31 MM

## GRADING RESULTS

Carat Weight 1.01 CARAT

Color Grade D

Clarity Grade VS 1



Sample Image Used

## COLOR

D E F G H I J Faint Very Light Light

## CLARITY

FL IF WS<sup>1-2</sup> VS<sup>1-2</sup> S<sup>1-2</sup> |<sup>1-3</sup>

Flawless	Internally Flawless	Very Very Slightly Included	Very Slightly Included	Slightly Included	Included
----------	---------------------	-----------------------------	------------------------	-------------------	----------



© IGI 2020, International Gemological Institute

FD - 10 20

**www.igi.org**



December 17, 2025  
 IGI Report No LG756540412  
 CUSHION MODIFIED BRILLIANT

7.06 X 5.13 X 3.31 MM	1.01 CARAT	D	VS 1	64.6%	65%	Slightly Thick To Thick (excellent)	Pointed	EXCELLENT	EXCELLENT	NONE	none (C1254564012)
	Carat Weight	Color Grade	Clarity Grade	Depth	Table	Girdle	Culet	Polish	Symmetry	Fluorescence	Comments

**Comments:**  
This Laboratory Grown Diamond was created by Chemical Vapor Deposition (CVD) growth process.