



ELECTRONIC COPY

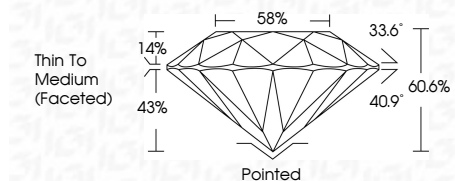
LG756538303
Report verification at igi.org



January 23, 2026
IGI Report Number **LG756538303**
Description **LABORATORY GROWN DIAMOND**
Shape and Cutting Style **ROUND BRILLIANT**
Measurements **6.58 - 6.63 X 4.00 MM**

GRADING RESULTS

Carat Weight **1.07 CARAT**
Color Grade **FANCY VIVID PINK**
Clarity Grade **VS 1**
Cut Grade **IDEAL**



ADDITIONAL GRADING INFORMATION

Polish **EXCELLENT**
Symmetry **EXCELLENT**
Fluorescence **SLIGHT**
Inscription(s) **IGI LG756538303**
Comments: This Laboratory Grown Diamond was created by Chemical Vapor Deposition (CVD) growth process. Indications of post-growth treatment.



January 23, 2026
IGI Report No LG756538303
ROUND BRILLIANT
6.58 - 6.63 X 4.00 MM
1.07 CARAT
FANCY VIVID PINK
VS 1
IDEAL
60.6%
58%
Thin To Medium (Faceted)
Pointed
EXCELLENT
EXCELLENT
SLIGHT
IGI LG756538303
Comments: This Laboratory Grown Diamond was created by Chemical Vapor Deposition (CVD) growth process. Indications of post-growth treatment.

January 23, 2026
IGI Report Number **LG756538303**
Description **LABORATORY GROWN DIAMOND**
Shape and Cutting Style **ROUND BRILLIANT**
Measurements **6.58 - 6.63 X 4.00 MM**

GRADING RESULTS

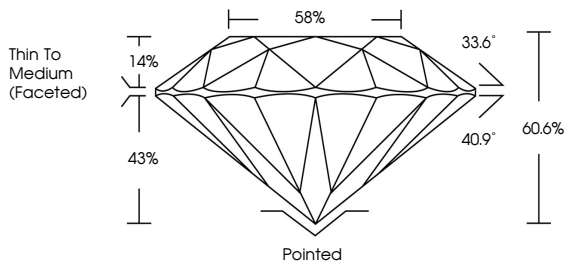
Carat Weight **1.07 CARAT**
Color Grade **FANCY VIVID PINK**
Clarity Grade **VS 1**
Cut Grade **IDEAL**

ADDITIONAL GRADING INFORMATION

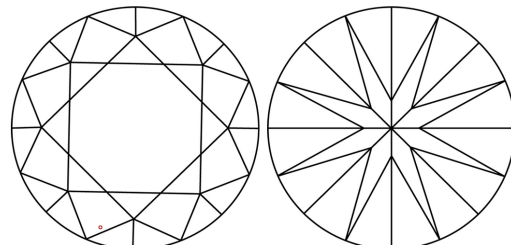
Polish **EXCELLENT**
Symmetry **EXCELLENT**
Fluorescence **SLIGHT**
Inscription(s) **IGI LG756538303**

Comments: This Laboratory Grown Diamond was created by Chemical Vapor Deposition (CVD) growth process. Indications of post-growth treatment.

PROPORTIONS

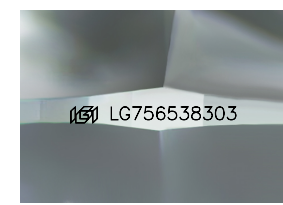


CLARITY CHARACTERISTICS



KEY TO SYMBOLS

Red symbols indicate internal characteristics.
Green symbols indicate external characteristics.



Sample Image Used

COLOR

D E F G H I J Faint Very Light Light

CLARITY

FL	IF	VS ¹⁻²	VS ¹⁻²	SI ¹⁻²	I ¹⁻³
Flawless	Internally Flawless	Very Very Slightly Included	Very Slightly Included	Slightly Included	Included

