



ELECTRONIC COPY

LG756538292
Report verification at igi.org



January 23, 2026

IGI Report Number **LG756538292**

Description **LABORATORY GROWN DIAMOND**

Shape and Cutting Style **ROUND BRILLIANT**

Measurements **8.03 - 8.06 X 4.88 MM**

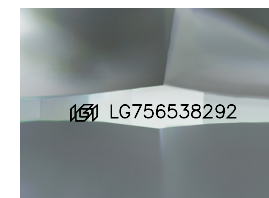
GRADING RESULTS

Carat Weight **1.95 CARAT**

Color Grade **FANCY INTENSE PINK**

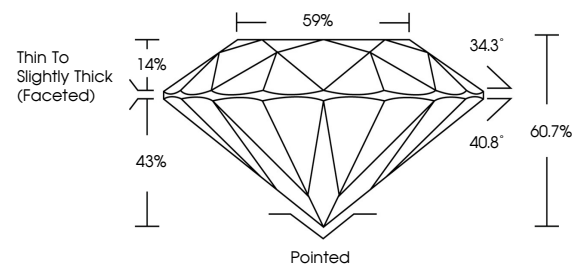
Clarity Grade **VS 1**

Cut Grade **IDEAL**

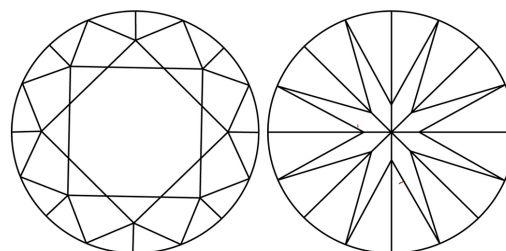


Sample Image Used

PROPORTIONS



CLARITY CHARACTERISTICS



KEY TO SYMBOLS

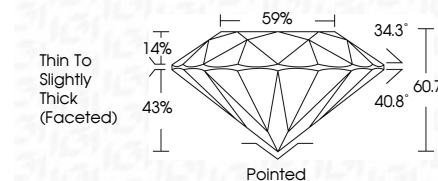
Red symbols indicate internal characteristics.
Green symbols indicate external characteristics.

COLOR

D E F G H I J Faint Very Light Light

CLARITY

FL	IF	VS ¹⁻²	VS ¹⁻²	SI ¹⁻²	I ¹⁻³
Flawless	Internally Flawless	Very Very Slightly Included	Very Slightly Included	Slightly Included	Included



ADDITIONAL GRADING INFORMATION

Polish **VERY GOOD**

Symmetry **VERY GOOD**

Fluorescence **SLIGHT**

Inscription(s) **IGI LG756538292**

Comments: This Laboratory Grown Diamond was created by Chemical Vapor Deposition (CVD) growth process. Indications of post-growth treatment.



January 23, 2026
IGI Report No LG756538292
ROUND BRILLIANT
8.03 - 8.06 X 4.88 MM
1.95 CARAT
FANCY INTENSE PINK
VS 1
IDEAL
60.7%
59%
Thin To Slightly Thick (Faceted)
Pointed
VERY GOOD
VERY GOOD
VERY GOOD
SLIGHT
IGI LG756538292

Comments: This Laboratory Grown Diamond was created by Chemical Vapor Deposition (CVD) growth process. Indications of post-growth treatment.