



ELECTRONIC COPY

LG756536801 Report verification at igi.org



December 15, 2025 IGI Report Number LG756536801 Description LABORATORY GROWN DIAMOND Shape and Cutting Style ROUND BRILLIANT Measurements 6.49 - 6.55 X 4.04 MM GRADING RESULTS Carat Weight 1.06 CARAT Color Grade D Clarity Grade INTERNALLY FLAWLESS Cut Grade IDEAL

December 15, 2025 IGI Report Number LG756536801 Description LABORATORY GROWN DIAMOND Shape and Cutting Style ROUND BRILLIANT Measurements 6.49 - 6.55 X 4.04 MM

GRADING RESULTS

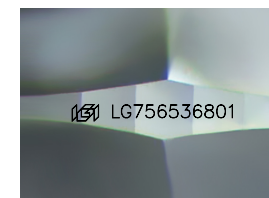
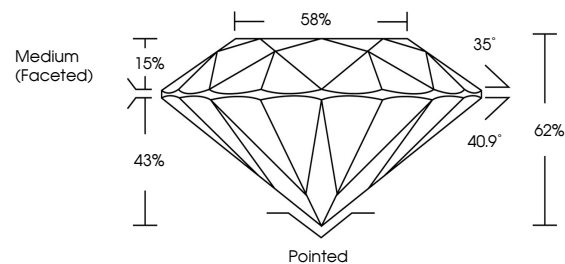
Carat Weight 1.06 CARAT Color Grade D Clarity Grade INTERNALLY FLAWLESS Cut Grade IDEAL

ADDITIONAL GRADING INFORMATION

Polish EXCELLENT Symmetry EXCELLENT Fluorescence NONE Inscription(s) LG756536801

Comments: HEARTS & ARROWS As Grown - No indication of post-growth treatment. This Laboratory Grown Diamond was created by High Pressure High Temperature (HPHT) growth process. Type II

PROPORTIONS



Sample Image Used

CLARITY CHARACTERISTICS



KEY TO SYMBOLS

Red symbols indicate internal characteristics. Green symbols indicate external characteristics.

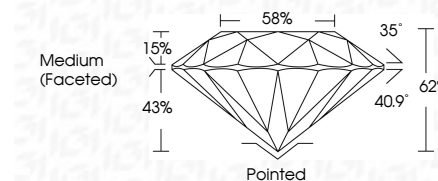


COLOR

D E F G H I J Faint Very Light Light

CLARITY

Table with columns: FL, IF, VS 1-2, VS 1-2, SI 1-2, I 1-3. Row: Flawless, Internally Flawless, Very Very Slightly Included, Very Slightly Included, Slightly Included, Included



ADDITIONAL GRADING INFORMATION

Polish EXCELLENT Symmetry EXCELLENT Fluorescence NONE Inscription(s) LG756536801 Comments: HEARTS & ARROWS As Grown - No indication of post-growth treatment. This Laboratory Grown Diamond was created by High Pressure High Temperature (HPHT) growth process. Type II



Summary table: December 15, 2025 IGI Report No LG756536801 ROUND BRILLIANT 6.49 - 6.55 X 4.04 MM 1.06 CARAT D IDEAL 62% 58% Medium (Faceted) Pointed EXCELLENT EXCELLENT NONE NONE LG756536801

Comments: HEARTS & ARROWS As Grown - No indication of post-growth treatment. This Laboratory Grown Diamond was created by High Pressure High Temperature (HPHT) growth process. Type II