



INTERNATIONAL GEMOLOGICAL INSTITUTE

ELECTRONIC COPY

LABORATORY GROWN DIAMOND REPORT

December 10, 2025

IGI Report Number

LG756535856

Description

LABORATORY GROWN DIAMOND

Shape and Cutting Style

OVAL BRILLIANT

Measurements

7.95 X 5.35 X 3.32 MM

GRADING RESULTS

Carat Weight

0.89 CARAT

Color Grade

D

Clarity Grade

INTERNALLY FLAWLESS

ADDITIONAL GRADING INFORMATION

Polish

EXCELLENT

Symmetry

EXCELLENT

Fluorescence

NONE

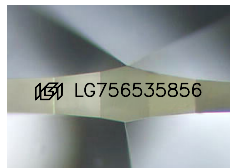
Inscription(s)

IGI LG756535856

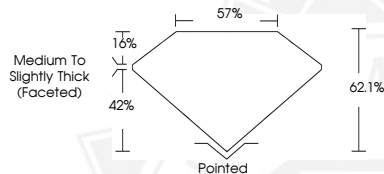
Comments: As Grown - No indication of post-growth treatment.

This Laboratory Grown Diamond was created by High Pressure High Temperature (HPHT) growth process.

Type II



Sample Image Used



December 10, 2025

IGI Report Number LG756535856

OVAL BRILLIANT

LABORATORY GROWN DIAMOND

7.95 X 5.35 X 3.32 MM

Carat Weight 0.89 CARAT

Color Grade D

Clarity Grade I.F.

Polish EXCELLENT

Symmetry EXCELLENT

Fluorescence NONE

Inscription(s) IGI LG756535856

Comments: As Grown - No indication of post-growth treatment. This Laboratory Grown Diamond was created by High Pressure High Temperature (HPHT) growth process. Type II



December 10, 2025

IGI Report Number LG756535856

OVAL BRILLIANT

LABORATORY GROWN DIAMOND

7.95 X 5.35 X 3.32 MM

Carat Weight 0.89 CARAT

Color Grade D

Clarity Grade I.F.

Polish EXCELLENT

Symmetry EXCELLENT

Fluorescence NONE

Inscription(s) IGI LG756535856

Comments: As Grown - No indication of post-growth treatment. This Laboratory Grown Diamond was created by High Pressure High Temperature (HPHT) growth process. Type II



THIS DOCUMENT WAS PRODUCED WITH THE FOLLOWING SECURITY MEASURES: SPECIAL DOCUMENT PAPER, INK SCREENS, WATERMARK, BACKGROUND DESIGNS, HOLOGRAM AND OTHER SECURITY FEATURES NOT LISTED AND DO EXCEED DOCUMENT SECURITY INDUSTRY GUIDELINES.

For terms & conditions and to verify this report, please visit www.igi.org