



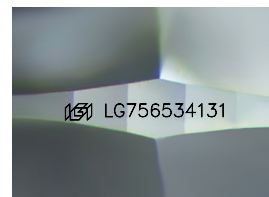
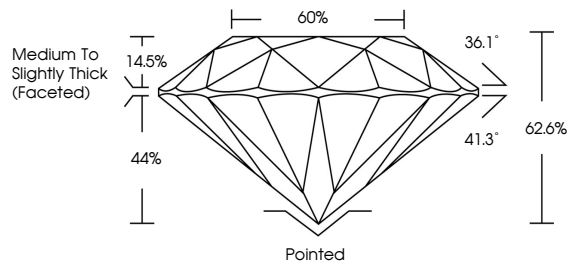
**INTERNATIONAL
GEMOLOGICAL
INSTITUTE**

ELECTRONIC COPY

LABORATORY GROWN DIAMOND REPORT

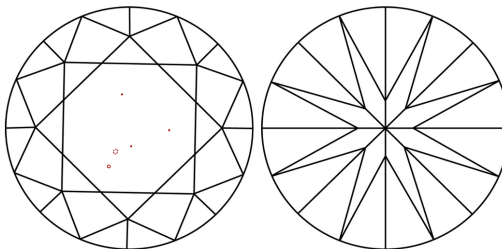
LG756534131
Report verification at igi.org

PROPORTIONS



Sample Image Used

CLARITY CHARACTERISTICS



KEY TO SYMBOLS

Red symbols indicate internal characteristics.
Green symbols indicate external characteristics.

COLOR

D E F G H I J Faint Very Light Light

CLARITY

FL IF WS¹⁻² VS¹⁻² S¹⁻² |¹⁻³

Flawless	Internally Flawless	Very Very Slightly Included	Very Slightly Included	Slightly Included	Included
----------	---------------------	-----------------------------	------------------------	-------------------	----------



December 11, 2025

IGI Report Number **LG756534131**

Description	LABORATORY GROWN DIAMOND
-------------	--------------------------

Shape and Cutting Style **ROUND BRILLIANT**

Measurements 8.61 - 8.63 X 5.40 MM

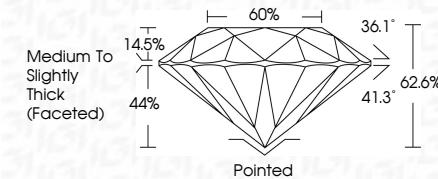
GRADING RESULTS

Carat Weight **2.50 CARATS**

Color Grade	F
-------------	---

Clarity Grade VS 1

Cut Grade **EXCELLENT**



ADDITIONAL GRADING INFORMATION

Polish **EXCELLENCE**Symmetry **EXCELLENCE**

Fluorescence 5.4 10.5 10.5 NONI

Inscription(s) LG75653413

Comments: This Laboratory Grown Diamond was created by Chemical Vapor Deposition (CVD) growth process.
Type IIa



IG



© IGI 2020, International Gemological Institute

FD - 10 20

www.igi.org

THIS DOCUMENT WAS PRODUCED WITH THE FOLLOWING SECURITY MEASURES: SPECIAL DOCUMENT PAPER, INK SCREENS, WATERMARK, BACKGROUND DESIGNS, HOLOGRAM AND OTHER SECURITY FEATURES NOT LISTED AND DO EXCEED DOCUMENT SECURITY INDUSTRY GUIDELINES

December 11, 2025
IGI Report No LG756534131
ROUND BRILLIANT

8.51 - 8.63 X 5.40 MM	Color Grade	VS 1	2.60 CARATS F
Carat Weight	Clarity Grade	EXCELLENT	
	Cut Grade	62.6%	
	Depth	60%	
	Table	Medium to slightly Thick (faceted)	
	Girdle		
	Culet	Pointed	
	Polish	EXCELLENT	
	Symmetry	EXCELLENT	
	Fluorescence	NONE	
	Measurements	4mm X 3.7mm X 5.1mm	

Comments:
This Laboratory Grown Diamond was created by Chemical Vapor Deposition (CVD) growth process.