



# INTERNATIONAL GEMOLOGICAL INSTITUTE

ELECTRONIC COPY

## LABORATORY GROWN DIAMOND REPORT

December 16, 2025

IGI Report Number

LG756533727

Description

LABORATORY GROWN DIAMOND

Shape and Cutting Style

ROUND BRILLIANT

Measurements

5.68 - 5.70 X 3.46 MM

### GRADING RESULTS

Carat Weight

0.68 CARAT

Color Grade

FANCY DEEP ORANGE

Clarity Grade

VVS 2

Cut Grade

IDEAL

### ADDITIONAL GRADING INFORMATION

Polish

EXCELLENT

Symmetry

VERY GOOD

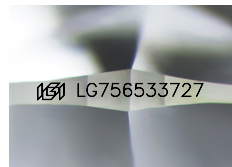
Fluorescence

NONE

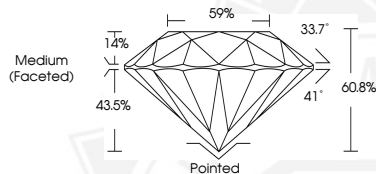
Inscription(s)

IGI LG756533727

Comments: This Laboratory Grown Diamond was created by High Pressure High Temperature (HPHT) growth process. Indications of post-growth treatment.



Sample Image Used



December 16, 2025

IGI Report Number LG756533727

ROUND BRILLIANT

LABORATORY GROWN DIAMOND

5.68 - 5.70 X 3.46 MM

Carat Weight 0.68 CARAT

Color Grade FANCY DEEP ORANGE

Clarity Grade VVS 2

Cut Grade IDEAL

Polish EXCELLENT

Symmetry VERY GOOD

Fluorescence NONE

Inscription(s) IGI LG756533727

Comments: This Laboratory Grown Diamond was created by High Pressure High Temperature (HPHT) growth process. Indications of post-growth treatment.



December 16, 2025

IGI Report Number LG756533727

ROUND BRILLIANT

LABORATORY GROWN DIAMOND

5.68 - 5.70 X 3.46 MM

Carat Weight 0.68 CARAT

Color Grade FANCY DEEP ORANGE

Clarity Grade VVS 2

Cut Grade IDEAL

Polish EXCELLENT

Symmetry VERY GOOD

Fluorescence NONE

Inscription(s) IGI LG756533727

Comments: This Laboratory Grown Diamond was created by High Pressure High Temperature (HPHT) growth process. Indications of post-growth treatment.



THIS DOCUMENT WAS PRODUCED WITH THE FOLLOWING SECURITY MEASURES: SPECIAL DOCUMENT PAPER, INK SCREENS, WATERMARK, BACKGROUND DESIGNS, HOLOGRAM AND OTHER SECURITY FEATURES NOT LISTED AND DO EXCEED DOCUMENT SECURITY INDUSTRY GUIDELINES.

For terms & conditions and to verify this report, please visit [www.igi.org](http://www.igi.org)