



December 18, 2025

IGI Report Number **LG756533726**

ROUND BRILLIANT

LABORATORY GROWN DIAMOND

5.48 - 5.54 X 3.37 MM

Carat Weight **0.63 CARAT**

Color Grade **FANCY DEEP ORANGE**

Clarity Grade **VS 1**

Cut Grade **EXCELLENT**

Polish **EXCELLENT**

Symmetry **VERY GOOD**

Fluorescence **NONE**

Inscription(s) **IGI LG756533726**

Comments: This Laboratory Grown Diamond was created by High Pressure High Temperature (HPHT) growth process. Indications of post-growth treatment.

LABORATORY GROWN DIAMOND REPORT

December 18, 2025

IGI Report Number

LG756533726

Description

LABORATORY GROWN DIAMOND

Shape and Cutting Style

ROUND BRILLIANT

Measurements

5.48 - 5.54 X 3.37 MM

GRADING RESULTS

Carat Weight

0.63 CARAT

Color Grade

FANCY DEEP ORANGE

Clarity Grade

VS 1

Cut Grade

EXCELLENT

ADDITIONAL GRADING INFORMATION

Polish

EXCELLENT

Symmetry

VERY GOOD

Fluorescence

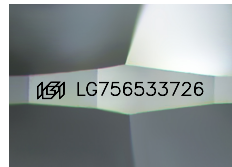
NONE

Inscription(s)

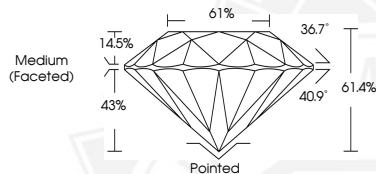
IGI LG756533726

Comments: This Laboratory Grown Diamond was created by High Pressure High Temperature (HPHT) growth process.

Indications of post-growth treatment.



Sample Image Used



December 18, 2025

IGI Report Number **LG756533726**

ROUND BRILLIANT

LABORATORY GROWN DIAMOND

5.48 - 5.54 X 3.37 MM

Carat Weight **0.63 CARAT**

Color Grade **FANCY DEEP ORANGE**

Clarity Grade **VS 1**

Cut Grade **EXCELLENT**

Polish **EXCELLENT**

Symmetry **VERY GOOD**

Fluorescence **NONE**

Inscription(s) **IGI LG756533726**

Comments: This Laboratory Grown Diamond was created by High Pressure High Temperature (HPHT) growth process. Indications of post-growth treatment.



THIS DOCUMENT WAS PRODUCED WITH THE FOLLOWING SECURITY MEASURES: SPECIAL DOCUMENT PAPER, INK SCREENS, WATERMARK, BACKGROUND DESIGNS, HOLOGRAM AND OTHER SECURITY FEATURES NOT LISTED AND DO EXCEED DOCUMENT SECURITY INDUSTRY GUIDELINES.