



**INTERNATIONAL  
GEMOLOGICAL  
INSTITUTE**

**LABORATORY GROWN DIAMOND REPORT**

December 18, 2025  
 IGI Report Number **LG756533719**  
 Description **LABORATORY GROWN DIAMOND**  
 Shape and Cutting Style **ROUND BRILLIANT**  
 Measurements **5.43 - 5.45 X 3.49 MM**

**GRADING RESULTS**

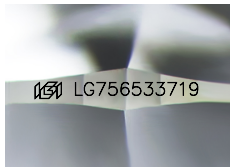
Carat Weight **0.65 CARAT**  
 Color Grade **FANCY DEEP ORANGE**  
 Clarity Grade **SI 1**  
 Cut Grade **VERY GOOD**

**ADDITIONAL GRADING INFORMATION**

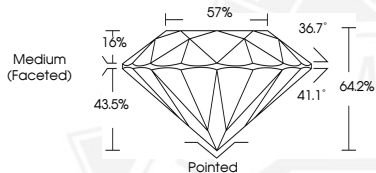
Polish **VERY GOOD**  
 Symmetry **VERY GOOD**  
 Fluorescence **NONE**  
 Inscription(s) **IGI LG756533719**

Comments: This Laboratory Grown Diamond was created by High Pressure High Temperature (HPHT) growth process. Indications of post-growth treatment.

**ELECTRONIC COPY**



Sample Image Used



December 18, 2025  
 IGI Report Number **LG756533719**  
 ROUND BRILLIANT  
 LABORATORY GROWN DIAMOND  
 5.43 - 5.45 X 3.49 MM  
 Carat Weight **0.65 CARAT**  
 Color Grade **FANCY DEEP ORANGE**  
 Clarity Grade **SI 1**  
 Cut Grade **VERY GOOD**  
 Polish **VERY GOOD**  
 Symmetry **VERY GOOD**  
 Fluorescence **NONE**  
 Inscription(s) **IGI LG756533719**

Comments: This Laboratory Grown Diamond was created by High Pressure High Temperature (HPHT) growth process. Indications of post-growth treatment.



December 18, 2025  
 IGI Report Number **LG756533719**  
 ROUND BRILLIANT  
 LABORATORY GROWN DIAMOND  
 5.43 - 5.45 X 3.49 MM  
 Carat Weight **0.65 CARAT**  
 Color Grade **FANCY DEEP ORANGE**  
 Clarity Grade **SI 1**  
 Cut Grade **VERY GOOD**  
 Polish **VERY GOOD**  
 Symmetry **VERY GOOD**  
 Fluorescence **NONE**  
 Inscription(s) **IGI LG756533719**

Comments: This Laboratory Grown Diamond was created by High Pressure High Temperature (HPHT) growth process. Indications of post-growth treatment.



THIS DOCUMENT WAS PRODUCED WITH THE FOLLOWING SECURITY MEASURES: SPECIAL DOCUMENT PAPER, INK SCREENS, WATERMARK, BACKGROUND DESIGNS, HOLOGRAM AND OTHER SECURITY FEATURES NOT LISTED AND DO EXCEED DOCUMENT SECURITY INDUSTRY GUIDELINES.

For terms & conditions and to verify this report, please visit [www.igi.org](http://www.igi.org)