



December 18, 2025

IGI Report Number **LG756533713**

ROUND BRILLIANT

LABORATORY GROWN DIAMOND

5.79 - 5.82 X 3.66 MM

Carat Weight **0.76 CARAT**
Color Grade **FANCY DEEP ORANGE**

Clarity Grade **VS 1**
Cut Grade **VERY GOOD**
Polish **VERY GOOD**
Symmetry **GOOD**

Fluorescence **NONE**
Inscription(s) **IGI LG756533713**

Comments: This Laboratory Grown Diamond was created by High Pressure High Temperature (HPHT) growth process. Indications of post-growth treatment.

LABORATORY GROWN DIAMOND REPORT

December 18, 2025

IGI Report Number **LG756533713**

Description **LABORATORY GROWN DIAMOND**

Shape and Cutting Style **ROUND BRILLIANT**

Measurements **5.79 - 5.82 X 3.66 MM**

GRADING RESULTS

Carat Weight **0.76 CARAT**

Color Grade **FANCY DEEP ORANGE**

Clarity Grade **VS 1**

Cut Grade **VERY GOOD**

ADDITIONAL GRADING INFORMATION

Polish **VERY GOOD**

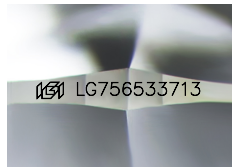
Symmetry **GOOD**

Fluorescence **NONE**

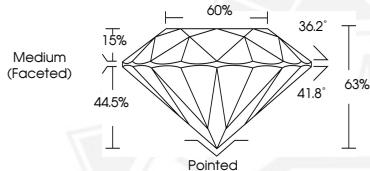
Inscription(s) **IGI LG756533713**

Comments: This Laboratory Grown Diamond was created by High Pressure High Temperature (HPHT) growth process.

Indications of post-growth treatment.



Sample Image Used



December 18, 2025

IGI Report Number **LG756533713**

ROUND BRILLIANT

LABORATORY GROWN DIAMOND

5.79 - 5.82 X 3.66 MM

Carat Weight **0.76 CARAT**
Color Grade **FANCY DEEP ORANGE**

Clarity Grade **VS 1**
Cut Grade **VERY GOOD**
Polish **VERY GOOD**
Symmetry **GOOD**

Fluorescence **NONE**
Inscription(s) **IGI LG756533713**

Comments: This Laboratory Grown Diamond was created by High Pressure High Temperature (HPHT) growth process. Indications of post-growth treatment.



THIS DOCUMENT WAS PRODUCED WITH THE FOLLOWING SECURITY MEASURES: SPECIAL DOCUMENT PAPER, INK SCREENS, WATERMARK, BACKGROUND DESIGNS, HOLOGRAM AND OTHER SECURITY FEATURES NOT LISTED AND DO EXCEED DOCUMENT SECURITY INDUSTRY GUIDELINES.