



**ELECTRONIC COPY**

LG756532760  
Report verification at igi.org



December 19, 2025

IGI Report Number **LG756532760**

Description **LABORATORY GROWN DIAMOND**

Shape and Cutting Style **EMERALD CUT**

Measurements **11.13 X 7.39 X 5.03 MM**

**GRADING RESULTS**

Carat Weight **4.07 CARATS**

Color Grade **FANCY INTENSE PINK**

Clarity Grade **VS 2**

December 19, 2025  
IGI Report Number **LG756532760**  
Description **LABORATORY GROWN DIAMOND**  
Shape and Cutting Style **EMERALD CUT**  
Measurements **11.13 X 7.39 X 5.03 MM**

**GRADING RESULTS**

Carat Weight **4.07 CARATS**

Color Grade **FANCY INTENSE PINK**

Clarity Grade **VS 2**

**ADDITIONAL GRADING INFORMATION**

Polish **EXCELLENT**

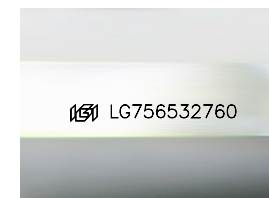
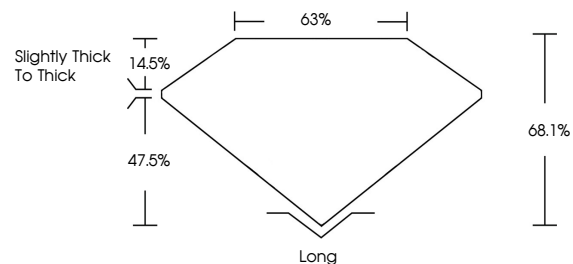
Symmetry **EXCELLENT**

Fluorescence **STRONG**

Inscription(s) **LG756532760**

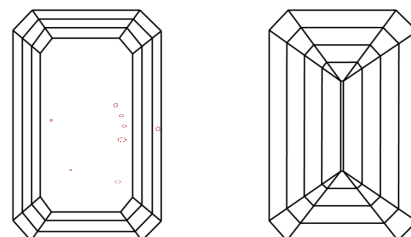
Comments: This Laboratory Grown Diamond was created by Chemical Vapor Deposition (CVD) growth process.  
Indications of post-growth treatment.

**PROPORTIONS**



Sample Image Used

**CLARITY CHARACTERISTICS**



**KEY TO SYMBOLS**

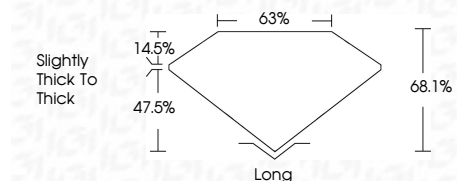
Red symbols indicate internal characteristics.  
Green symbols indicate external characteristics.

**COLOR**

D E F G H I J Faint Very Light Light

**CLARITY**

FL	IF	VS <sup>1-2</sup>	VS <sup>1-2</sup>	SI <sup>1-2</sup>	I <sup>1-3</sup>
Flawless	Internally Flawless	Very Very Slightly Included	Very Slightly Included	Slightly Included	Included



**ADDITIONAL GRADING INFORMATION**

Polish **EXCELLENT**

Symmetry **EXCELLENT**

Fluorescence **STRONG**

Inscription(s) **LG756532760**

Comments: This Laboratory Grown Diamond was created by Chemical Vapor Deposition (CVD) growth process.  
Indications of post-growth treatment.



**IGI**



December 19, 2025  
IGI Report No **LG756532760**  
**EMERALD CUT**  
11.13 X 7.39 X 5.03 MM  
4.07 CARATS  
FANCY INTENSE PINK  
Color Grade  
VS 2  
Depth 68.1%  
Table 63%  
Girdle Slightly thick to thick  
Culet Long  
Polish EXCELLENT  
Symmetry EXCELLENT  
Fluorescence STRONG  
Inscription(s) LG756532760  
Comments: This Laboratory Grown Diamond was created by Chemical Vapor Deposition (CVD) growth process.  
Indications of post-growth treatment.