



ELECTRONIC COPY

LG756532460
Report verification at igi.org



December 11, 2025

IGI Report Number **LG756532460**

Description **LABORATORY GROWN DIAMOND**

Shape and Cutting Style **CUT CORNERED
RECTANGULAR MODIFIED
BRILLIANT**

Measurements **10.04 X 6.90 X 4.72 MM**

GRADING RESULTS

Carat Weight **2.88 CARATS**

Color Grade **E**

Clarity Grade **VS 2**

December 11, 2025

IGI Report Number **LG756532460**

Description **LABORATORY GROWN DIAMOND**

Shape and Cutting Style **CUT CORNERED RECTANGULAR
MODIFIED BRILLIANT**

Measurements **10.04 X 6.90 X 4.72 MM**

GRADING RESULTS

Carat Weight **2.88 CARATS**

Color Grade **E**

Clarity Grade **VS 2**

ADDITIONAL GRADING INFORMATION

Polish **EXCELLENT**

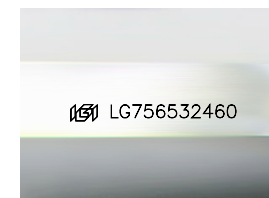
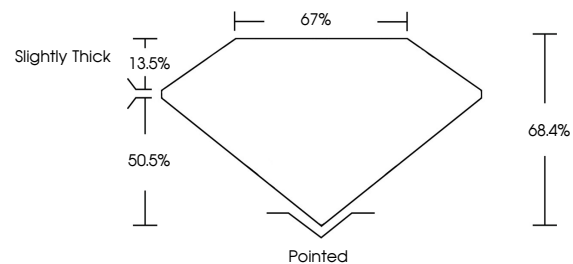
Symmetry **EXCELLENT**

Fluorescence **NONE**

Inscription(s) **IGI LG756532460**

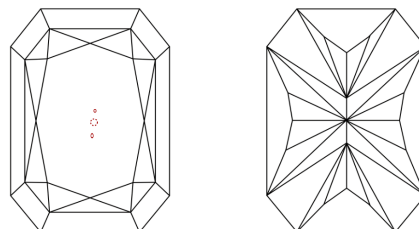
Comments: This Laboratory Grown Diamond was created by Chemical Vapor Deposition (CVD) growth process. Type IIa

PROPORTIONS



Sample Image Used

CLARITY CHARACTERISTICS



KEY TO SYMBOLS

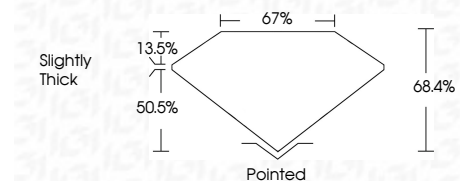
Red symbols indicate internal characteristics.
Green symbols indicate external characteristics.

COLOR

D E F G H I J Faint Very Light Light

CLARITY

FL	IF	VS ¹⁻²	VS ¹⁻²	SI ¹⁻²	I ¹⁻³
Flawless	Internally Flawless	Very Very Slightly Included	Very Slightly Included	Slightly Included	Included



ADDITIONAL GRADING INFORMATION

Polish **EXCELLENT**

Symmetry **EXCELLENT**

Fluorescence **NONE**

Inscription(s) **IGI LG756532460**

Comments: This Laboratory Grown Diamond was created by Chemical Vapor Deposition (CVD) growth process. Type IIa



IGI



December 11, 2025	IGI Report No LG756532460	CUT CORNERED RECT. MODIFIED BRILLIANT	10.04 X 6.90 X 4.72 MM	2.88 CARATS	E	VS 2	68.4%	67%	Slightly Thick	Pointed	EXCELLENT	EXCELLENT	NONE	IGI LG756532460
Color Grade	Carat Weight	Clarity Grade	Table	Depth	Graile	Culet	Polish	Symmetry	Fluorescence	Inscription(s)	Comments: This Laboratory Grown Diamond was created by Chemical Vapor Deposition (CVD) growth process. Type IIa			