



December 10, 2025

IGI Report Number **LG756531969**

**ROUND BRILLIANT  
LABORATORY GROWN DIAMOND  
5.10 - 5.14 X 3.20 MM**

Carat Weight	<b>0.52 CARAT</b>
Color Grade	<b>E</b>
Clarity Grade	<b>VVS 2</b>
Cut Grade	<b>EXCELLENT</b>
Polish	<b>VERY GOOD</b>
Symmetry	<b>VERY GOOD</b>
Fluorescence	<b>NONE</b>
Inscription(s)	<b>IGI LG756531969</b>

Comments: This Laboratory Grown Diamond was created by Chemical Vapor Deposition (CVD) growth process. Type IIa

**LABORATORY GROWN DIAMOND REPORT**

December 10, 2025

IGI Report Number **LG756531969**

Description **LABORATORY GROWN DIAMOND**

Shape and Cutting Style **ROUND BRILLIANT**

Measurements **5.10 - 5.14 X 3.20 MM**

**GRADING RESULTS**

Carat Weight **0.52 CARAT**

Color Grade **E**

Clarity Grade **VVS 2**

Cut Grade **EXCELLENT**

**ADDITIONAL GRADING INFORMATION**

Polish **VERY GOOD**

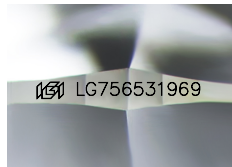
Symmetry **VERY GOOD**

Fluorescence **NONE**

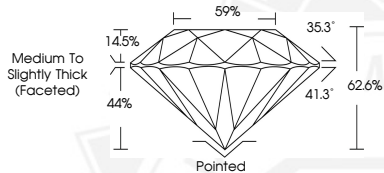
Inscription(s) **IGI LG756531969**

Comments: This Laboratory Grown Diamond was created by Chemical Vapor Deposition (CVD) growth process.

Type IIa



Sample Image Used



December 10, 2025

IGI Report Number **LG756531969**

**ROUND BRILLIANT  
LABORATORY GROWN DIAMOND  
5.10 - 5.14 X 3.20 MM**

Carat Weight	<b>0.52 CARAT</b>
Color Grade	<b>E</b>
Clarity Grade	<b>VVS 2</b>
Cut Grade	<b>EXCELLENT</b>
Polish	<b>VERY GOOD</b>
Symmetry	<b>VERY GOOD</b>
Fluorescence	<b>NONE</b>
Inscription(s)	<b>IGI LG756531969</b>

Comments: This Laboratory Grown Diamond was created by Chemical Vapor Deposition (CVD) growth process. Type IIa



THIS DOCUMENT WAS PRODUCED WITH THE FOLLOWING SECURITY MEASURES: SPECIAL DOCUMENT PAPER, INK SCREENS, WATERMARK, BACKGROUND DESIGNS, HOLOGRAM AND OTHER SECURITY FEATURES NOT LISTED AND DO EXCEED DOCUMENT SECURITY INDUSTRY GUIDELINES.