



December 11, 2025

IGI Report Number **LG756531929**

**ROUND BRILLIANT  
LABORATORY GROWN DIAMOND**  
5.13 - 5.17 X 3.18 MM

|                |                        |
|----------------|------------------------|
| Carat Weight   | <b>0.53 CARAT</b>      |
| Color Grade    | <b>E</b>               |
| Clarity Grade  | <b>VS 1</b>            |
| Cut Grade      | <b>VERY GOOD</b>       |
| Polish         | <b>VERY GOOD</b>       |
| Symmetry       | <b>VERY GOOD</b>       |
| Fluorescence   | <b>NONE</b>            |
| Inscription(s) | <b>IGI LG756531929</b> |

Comments: This Laboratory Grown Diamond was created by Chemical Vapor Deposition (CVD) growth process. Type IIa

**LABORATORY GROWN DIAMOND REPORT**

December 11, 2025

IGI Report Number **LG756531929**

Description **LABORATORY GROWN DIAMOND**

Shape and Cutting Style **ROUND BRILLIANT**

Measurements **5.13 - 5.17 X 3.18 MM**

**GRADING RESULTS**

Carat Weight **0.53 CARAT**

Color Grade **E**

Clarity Grade **VS 1**

Cut Grade **VERY GOOD**

**ADDITIONAL GRADING INFORMATION**

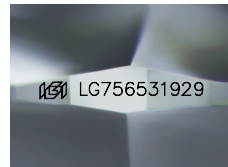
Polish **VERY GOOD**

Symmetry **VERY GOOD**

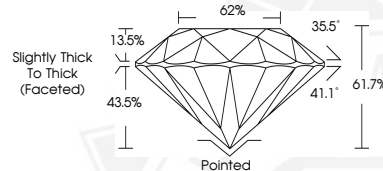
Fluorescence **NONE**

Inscription(s) **IGI LG756531929**

Comments: This Laboratory Grown Diamond was created by Chemical Vapor Deposition (CVD) growth process. Type IIa



Sample Image Used



December 11, 2025

IGI Report Number **LG756531929**

**ROUND BRILLIANT  
LABORATORY GROWN DIAMOND**  
5.13 - 5.17 X 3.18 MM

|                |                        |
|----------------|------------------------|
| Carat Weight   | <b>0.53 CARAT</b>      |
| Color Grade    | <b>E</b>               |
| Clarity Grade  | <b>VS 1</b>            |
| Cut Grade      | <b>VERY GOOD</b>       |
| Polish         | <b>VERY GOOD</b>       |
| Symmetry       | <b>VERY GOOD</b>       |
| Fluorescence   | <b>NONE</b>            |
| Inscription(s) | <b>IGI LG756531929</b> |

Comments: This Laboratory Grown Diamond was created by Chemical Vapor Deposition (CVD) growth process. Type IIa



THIS DOCUMENT WAS PRODUCED WITH THE FOLLOWING SECURITY MEASURES: SPECIAL DOCUMENT PAPER, INK SCREENS, WATERMARK, BACKGROUND DESIGNS, HOLOGRAM AND OTHER SECURITY FEATURES NOT LISTED AND DO EXCEED DOCUMENT SECURITY INDUSTRY GUIDELINES.