



ELECTRONIC COPY

LG756530714
Report verification at igi.org



December 24, 2025

IGI Report Number **LG756530714**

Description **LABORATORY GROWN DIAMOND**

Shape and Cutting Style **OLD EUROPEAN CUT**

Measurements **10.72 - 10.80 X 6.47 MM**

GRADING RESULTS

Carat Weight **5.00 CARATS**

Color Grade **E**

Clarity Grade **VS 1**

December 24, 2025

IGI Report Number **LG756530714**

Description **LABORATORY GROWN DIAMOND**

Shape and Cutting Style **OLD EUROPEAN CUT**

Measurements **10.72 - 10.80 X 6.47 MM**

GRADING RESULTS

Carat Weight **5.00 CARATS**

Color Grade **E**

Clarity Grade **VS 1**

ADDITIONAL GRADING INFORMATION

Polish **EXCELLENT**

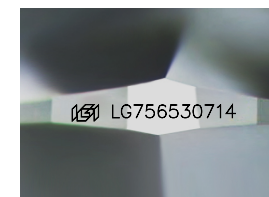
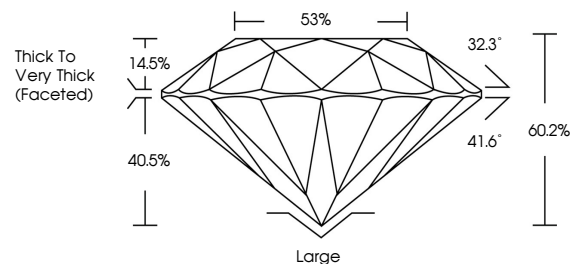
Symmetry **EXCELLENT**

Fluorescence **NONE**

Inscription(s) **IGI LG756530714**

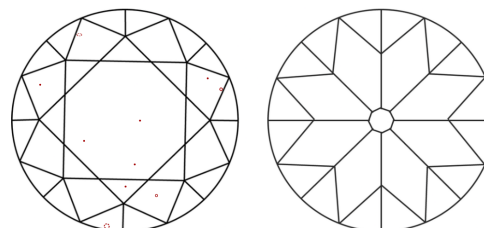
Comments: This Laboratory Grown Diamond was created by Chemical Vapor Deposition (CVD) growth process. Type IIa

PROPORTIONS



Sample Image Used

CLARITY CHARACTERISTICS



KEY TO SYMBOLS

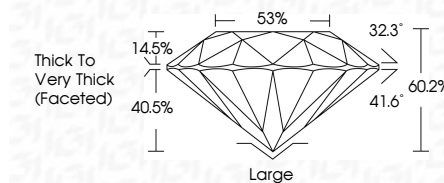
Red symbols indicate internal characteristics.
Green symbols indicate external characteristics.

COLOR

D E F G H I J Faint Very Light Light

CLARITY

FL	IF	VS ¹⁻²	VS ¹⁻²	SI ¹⁻²	I ¹⁻³
Flawless	Internally Flawless	Very Very Slightly Included	Very Slightly Included	Slightly Included	Included



ADDITIONAL GRADING INFORMATION

Polish **EXCELLENT**

Symmetry **EXCELLENT**

Fluorescence **NONE**

Inscription(s) **IGI LG756530714**

Comments: This Laboratory Grown Diamond was created by Chemical Vapor Deposition (CVD) growth process. Type IIa



IGI



December 24, 2025
IGI Report No LG756530714
OLD EUROPEAN CUT
10.72 - 10.80 X 6.47 MM
5.00 CARATS
E
VS 1
60.2%
85%
Thick to Very Thick (Faceted)
Large
EXCELLENT
EXCELLENT
NONE
NONE
IGI LG756530714

Comments: This Laboratory Grown Diamond was created by Chemical Vapor Deposition (CVD) growth process. Type IIa