



ELECTRONIC COPY

LG756530447
Report verification at igi.org



December 16, 2025

IGI Report Number **LG756530447**

Description **LABORATORY GROWN DIAMOND**

Shape and Cutting Style **OLD EUROPEAN CUT**

Measurements **8.51 - 8.57 X 5.32 MM**

GRADING RESULTS

Carat Weight **2.71 CARATS**

Color Grade **F**

Clarity Grade **VS 1**

December 16, 2025
IGI Report Number **LG756530447**
Description **LABORATORY GROWN DIAMOND**
Shape and Cutting Style **OLD EUROPEAN CUT**
Measurements **8.51 - 8.57 X 5.32 MM**

GRADING RESULTS

Carat Weight **2.71 CARATS**

Color Grade **F**

Clarity Grade **VS 1**

ADDITIONAL GRADING INFORMATION

Polish **EXCELLENT**

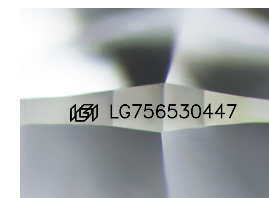
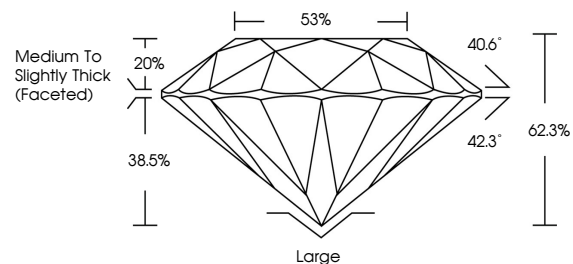
Symmetry **EXCELLENT**

Fluorescence **NONE**

Inscription(s) **IGI LG756530447**

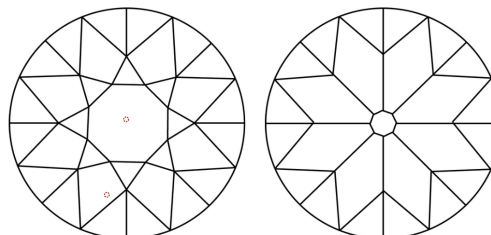
Comments: This Laboratory Grown Diamond was created by Chemical Vapor Deposition (CVD) growth process. Type IIa

PROPORTIONS



Sample Image Used

CLARITY CHARACTERISTICS



KEY TO SYMBOLS

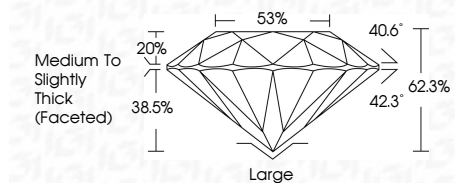
Red symbols indicate internal characteristics.
Green symbols indicate external characteristics.

COLOR

D E F G H I J Faint Very Light Light

CLARITY

FL	IF	VS ¹⁻²	VS ¹⁻²	SI ¹⁻²	I ¹⁻³
Flawless	Internally Flawless	Very Very Slightly Included	Very Slightly Included	Slightly Included	Included



ADDITIONAL GRADING INFORMATION

Polish **EXCELLENT**

Symmetry **EXCELLENT**

Fluorescence **NONE**

Inscription(s) **IGI LG756530447**

Comments: This Laboratory Grown Diamond was created by Chemical Vapor Deposition (CVD) growth process. Type IIa



IGI



December 16, 2025
IGI Report No LG756530447
OLD EUROPEAN CUT
8.51 - 8.57 X 5.32 MM
Carat Weight 2.71 CARATS
Color Grade F
Clarity Grade VS 1
Depth 62.3%
Table 20%
Girdle 38.5%
Medium to Slightly Thick (Faceted)
Culet Large
Polish EXCELLENT
Symmetry EXCELLENT
Fluorescence NONE
Inscription(s) IGI LG756530447
Comments: This Laboratory Grown Diamond was created by Chemical Vapor Deposition (CVD) growth process. Type IIa