

ELECTRONIC COPY

LABORATORY GROWN DIAMOND REPORT

December 15, 2025	
IGI Report Number	LG756528837
Description	LABORATORY GROWN DIAMOND
Shape and Cutting Style	CUT CORNERED RECTANGULAR MODIFIED BRILLIANT
Measurements	10.26 X 7.28 X 4.99 MM

GRADING RESULTS

Carat Weight	3.23 CARATS
Color Grade	D
Clarity Grade	VVS 2

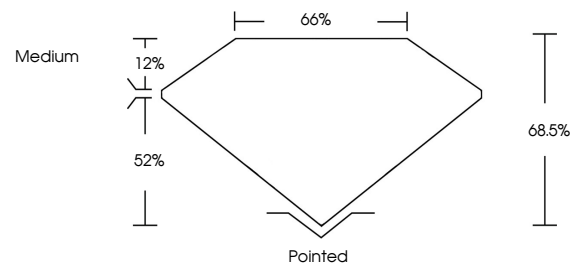
ADDITIONAL GRADING INFORMATION

Polish	EXCELLENT
Symmetry	EXCELLENT
Fluorescence	NONE
Inscription(s)	 LG756528837

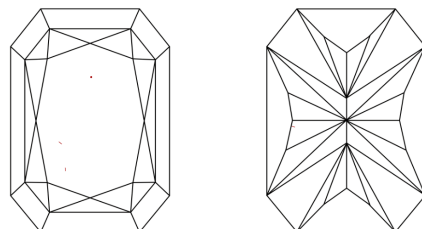
Comments: This Laboratory Grown Diamond was created by Chemical Vapor Deposition (CVD) growth process.
Type IIa

LG756528837
Report verification at lgi.org

PROPORTIONS

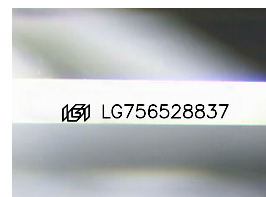


CLARITY CHARACTERISTICS



KEY TO SYMBOLS

Red symbols indicate internal characteristics.
Green symbols indicate external characteristics.



Sample Image Used

COLOR

D E F G H I J Faint Very Light Light

CLARITY

FL	IF	VVS ¹⁻²	VS ¹⁻²	SI ¹⁻²	I ¹⁻³
Flawless	Internally Flawless	Very Very Slightly Included	Very Slightly Included	Slightly Included	Included

LABORATORY GROWN DIAMOND REPORT

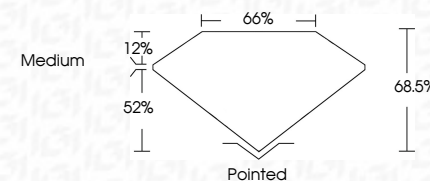


December 15, 2025	
IGI Report Number	LG756528837
Description	LABORATORY GROWN DIAMOND
Shape and Cutting Style	CUT CORNERED RECTANGULAR MODIFIED BRILLIANT

Measurements **10.26 X 7.28 X 4.99 MM**

GRADING RESULTS

Carat Weight	3.23 CARATS
Color Grade	D
Clarity Grade	VVS 2



ADDITIONAL GRADING INFORMATION

Polish	EXCELLENT
Symmetry	EXCELLENT
Fluorescence	NONE
Inscription(s)	 LG756528837
<p>Comments: This Laboratory Grown Diamond was created by Chemical Vapor Deposition (CVD) growth process.</p> <p>Type IIa</p>	



© IGI 2020, International Gemological Institute

FD - 10 20

December 15, 2025	GI Report No LG75659837	CUJ CORNERED RECT. MODIFIED BRILLIANT
10.26 x 7.28 x 4.91 MM	Carat Weight	3.23 CARATS
	Color Grade	D
	Clarity Grade	VVS 2
	Depth	68.6%
	Table	66%
	Girdle	Medium
	Culet	Pointed
	Pash	EXCELLENT
	Symmetry	EXCELLENT
	Fluorescence	NONE
	Inscriptions(s)	681 LG75659837
<p>Comments: Very Fine Green Diamond was created by Chemical Vapor Deposition (CVD) growth process.</p> <p>Type IIa</p>		