



ELECTRONIC COPY

LG756528384
Report verification at igi.org



January 9, 2026
IGI Report Number **LG756528384**
Description **LABORATORY GROWN DIAMOND**
Shape and Cutting Style **CUT CORNERED
RECTANGULAR MODIFIED
BRILLIANT**

Measurements **9.82 X 6.97 X 5.13 MM**

GRADING RESULTS

Carat Weight **3.55 CARATS**
Color Grade **F**
Clarity Grade **VS 1**

January 9, 2026
IGI Report Number **LG756528384**
Description **LABORATORY GROWN DIAMOND**
Shape and Cutting Style **CUT CORNERED RECTANGULAR
MODIFIED BRILLIANT**
Measurements **9.82 X 6.97 X 5.13 MM**

GRADING RESULTS

Carat Weight **3.55 CARATS**
Color Grade **F**
Clarity Grade **VS 1**

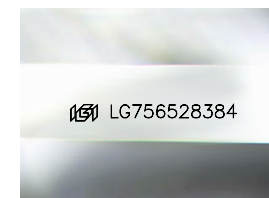
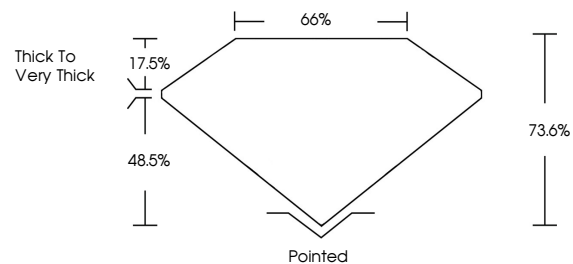
ADDITIONAL GRADING INFORMATION

Polish **EXCELLENT**
Symmetry **EXCELLENT**
Fluorescence **NONE**

Inscription(s) **IGI LG756528384**

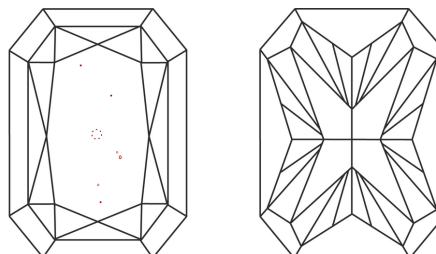
Comments: This Laboratory Grown Diamond was created by Chemical Vapor Deposition (CVD) growth process. Type IIa

PROPORTIONS



Sample Image Used

CLARITY CHARACTERISTICS



KEY TO SYMBOLS

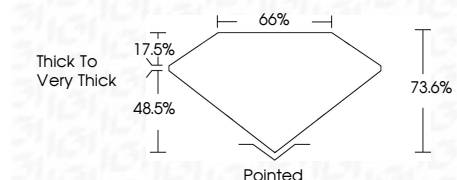
Red symbols indicate internal characteristics.
Green symbols indicate external characteristics.

COLOR

D E F G H I J Faint Very Light Light

CLARITY

FL	IF	VS ¹⁻²	VS ¹⁻²	SI ¹⁻²	I ¹⁻³
Flawless	Internally Flawless	Very Very Slightly Included	Very Slightly Included	Slightly Included	Included



ADDITIONAL GRADING INFORMATION

Polish **EXCELLENT**
Symmetry **EXCELLENT**
Fluorescence **NONE**
Inscription(s) **IGI LG756528384**

Comments: This Laboratory Grown Diamond was created by Chemical Vapor Deposition (CVD) growth process. Type IIa



IGI



January 9, 2026
IGI Report No LG756528384
CUT CORNERED RECT. MODIFIED BRILLIANT
9.82 X 6.97 X 5.13 MM
3.55 CARATS
F
VS 1
73.6%
48.5%
Thick To Very Thick
Pointed
EXCELLENT
EXCELLENT
NONE
IGI LG756528384
Comments: This Laboratory Grown Diamond was created by Chemical Vapor Deposition (CVD) growth process. Type IIa