



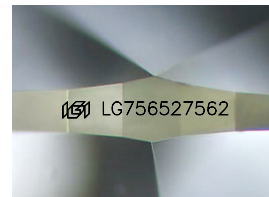
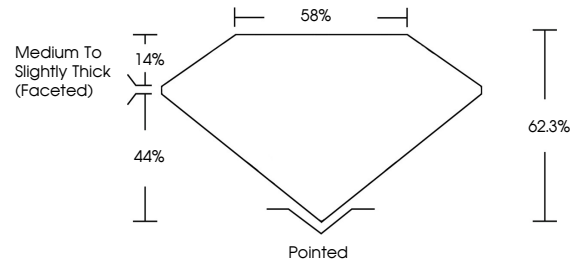
**INTERNATIONAL
GEMOLOGICAL
INSTITUTE**

ELECTRONIC COPY

LABORATORY GROWN DIAMOND REPORT

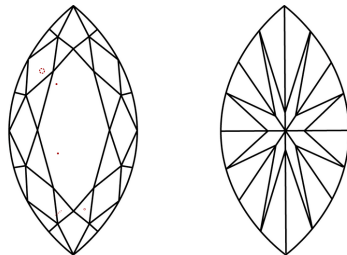
LG756527562
Report verification at igi.org

PROPORTIONS



Sample Image Used

CLARITY CHARACTERISTICS



KEY TO SYMBOLS

Red symbols indicate internal characteristics.
Green symbols indicate external characteristics.

COLOR

D E F G H I J Faint Very Light Light

CLARITY

FL	IF	VVS ¹⁻²	VS ¹⁻²	SI ¹⁻²	I ¹⁻³
Flawless	Internally Flawless	Very Very Slightly Included	Very Slightly Included	Slightly Included	Included



January 7, 2026

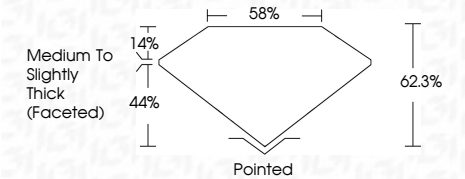
IGI Report Number **LG756527562**Description **LABORATORY GROWN DIAMOND**Shape and Cutting Style **MARQUISE BRILLIANT**

Measurements 12.66 X 6.71 X 4.18 MM

GRADING RESULTS

Carat Weight **2.03 CARATS**

Color Grade D

Clarity Grade **VVS 2**

ADDITIONAL GRADING INFORMATION

Polish **EXCELLENT**Symmetry **EXCELLENT**Fluorescence **NONE**Inscription(s)  LG756527562

Comments: This Laboratory Grown Diamond was created by Chemical Vapor Deposition (CVD) growth process.
Type IIa



IGI



© IGI 2020, International Gemological Institute

FD - 10 20

www.igi.org

THIS DOCUMENT WAS PRODUCED WITH THE FOLLOWING SECURITY MEASURES: SPECIAL DOCUMENT PAPER, INK SCREENS, WATERMARK BACKGROUND DESIGNS, HOLOGRAM AND OTHER SECURITY FEATURES NOT LISTED AND DO EXCEED DOCUMENT SECURITY INDUSTRY GUIDELINES.

January 7, 2026
IGI Report No LG756527562
MARQUISE BRILLIANT

12.66 X 6.71 X 4.18 MM	2.03 CARATS	D
Carat Weight	VVS 2	62.3%
Color Grade	55%	
Clarity Grade	Medium to slightly Thick (faceted)	
Depth	Pointed	
Table	EXCELLENT	
Girdle	EXCELLENT	
Culet	NONE	
Polish		
Symmetry		
Fluorescence		
Inscriptions		

Comments:
This Laboratory Grown Diamond was
created by Chemical Vapor Deposition
(CVD) growth process.
Type IIa