



**INTERNATIONAL
GEMOLOGICAL
INSTITUTE**

ELECTRONIC COPY

LABORATORY GROWN DIAMOND REPORT

| | |
|-------------------------|--------------------------|
| January 6, 2026 | |
| IGI Report Number | LG756525578 |
| Description | LABORATORY GROWN DIAMOND |
| Shape and Cutting Style | OVAL BRILLIANT |
| Measurements | 11.22 X 7.79 X 4.68 MM |

GRADING RESULTS

| | |
|---------------|-------------|
| Carat Weight | 2.53 CARATS |
| Color Grade | E |
| Clarity Grade | VVS 2 |

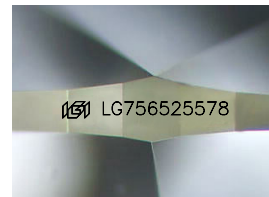
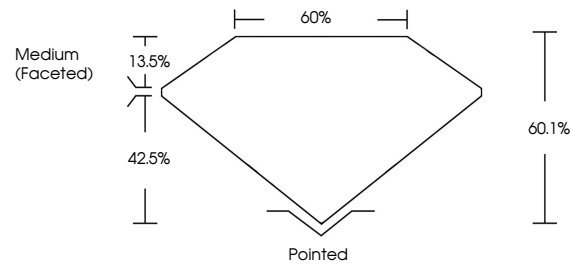
ADDITIONAL GRADING INFORMATION

| | |
|----------------|---|
| Polish | EXCELLENT |
| Symmetry | EXCELLENT |
| Fluorescence | NONE |
| Inscription(s) |  LG756525578 |

Comments: This Laboratory Grown Diamond was created by Chemical Vapor Deposition (CVD) growth process.
Type IIa

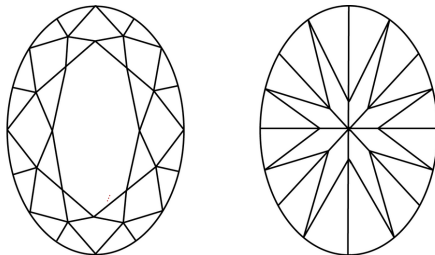
LG756525578
Report verification at igi.org

PROPORTIONS



Sample Image Used

CLARITY CHARACTERISTICS



KEY TO SYMBOLS

Red symbols indicate internal characteristics.
Green symbols indicate external characteristics.

COLOR

D E F G H I J Faint Very Light Light

CLARITY

| FL | IF | VVS ¹⁻² | VS ¹⁻² | SI ¹⁻² | I ¹⁻³ |
|----------|---------------------|-----------------------------|------------------------|-------------------|------------------|
| Flawless | Internally Flawless | Very Very Slightly Included | Very Slightly Included | Slightly Included | Included |

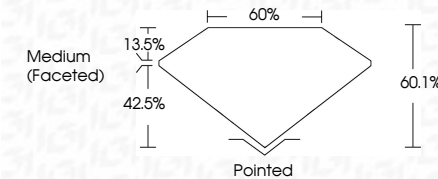
LABORATORY GROWN DIAMOND REPORT



| | |
|-------------------------|--------------------------|
| January 6, 2026 | |
| IGI Report Number | LG756525578 |
| Description | LABORATORY GROWN DIAMOND |
| Shape and Cutting Style | OVAL BRILLIANT |
| Measurements | 11.22 X 7.79 X 4.68 MM |

GRADING RESULTS

| | |
|---------------|-------------|
| Carat Weight | 2.53 CARATS |
| Color Grade | E |
| Clarity Grade | VVS 2 |



ADDITIONAL GRADING INFORMATION

| | |
|----------------|----------------------------|
| Polish | EXCELLENT |
| Symmetry | EXCELLENT |
| Fluorescence | NONE |
| Inscription(s) | LG7 LG756525578 |

Comments: This Laboratory Grown Diamond was created by Chemical Vapor Deposition (CVD) growth process.

Type IIa



IG

January 6, 2026
IGI Report No LG756525578
OVAL BRILLIANT

| | | |
|------------------------|-----------------|------------------|
| 11.22 X 7.79 X 4.68 MM | Carat Weight | 2.58 CARATS |
| | Color Grade | E |
| | Clarity Grade | VVS 2 |
| | Depth | 50.1% |
| | Table | 60% |
| | Girdle | Medium (Faceted) |
| | Quiet | Pointed |
| | Polish | EXCELLENT |
| | Symmetry | EXCELLENT |
| | Fluorescence | NONE |
| | Inscriptions(s) | 4681 G775959578 |

Comments:
This Laboratory Grown Diamond was created by Chemical Vapor Deposition (CVD) growth process.
Type IIa

© IGI 2020, International Gemological Institute

FD - 10 20



THIS DOCUMENT WAS PRODUCED WITH THE FOLLOWING SECURITY MEASURES: SPECIAL DOCUMENT PAPER, INK SCREENS, WATERMARK, BACKGROUND DESIGNS, HOLOGRAM AND OTHER SECURITY FEATURES NOT LISTED AND DO EXCEED DOCUMENT SECURITY INDUSTRY GUIDELINES

www.igi.org

