



ELECTRONIC COPY

LABORATORY GROWN DIAMOND REPORT

LG756524003
Report verification at igi.org

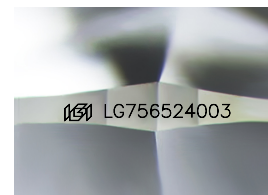
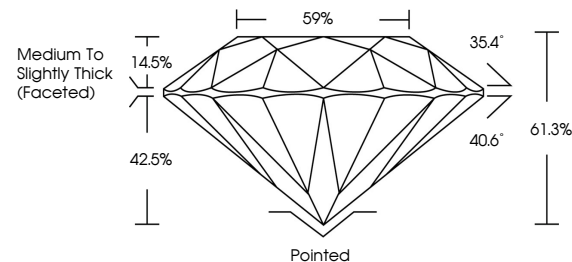
December 30, 2025	
IGI Report Number	LG756524003
Description	LABORATORY GROWN DIAMOND
Shape and Cutting Style	ROUND BRILLIANT
Measurements	9.19 - 9.26 X 5.66 MM
GRADING RESULTS	
Carat Weight	3.03 CARATS
Color Grade	E
Clarity Grade	VVS 1
Cut Grade	IDEAL

ADDITIONAL GRADING INFORMATION

Polish	EXCELLENT
Symmetry	EXCELLENT
Fluorescence	NONE
Inscription(s)	151 LG756524003

Comments: This Laboratory Grown Diamond was created by Chemical Vapor Deposition (CVD) growth process.
Type IIa

PROPORTIONS



Sample Image Used

COLOR

D E F G H I J Faint Very Light Light

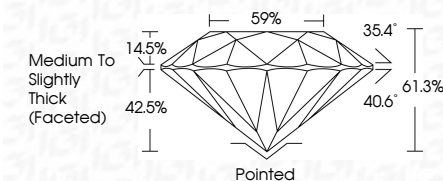
CLARITY

FL	IF	VVS ¹⁻²	VS ¹⁻²	SI ¹⁻²	I ¹⁻³
Flawless	Internally Flawless	Very Very Slightly Included	Very Slightly Included	Slightly Included	Included

LABORATORY GROWN DIAMOND REPORT



December 30, 2025	
IGI Report Number	LG756524003
Description	LABORATORY GROWN DIAMOND
Shape and Cutting Style	ROUND BRILLIANT
Measurements	9.19 - 9.26 X 5.66 MM
GRADING RESULTS	
Carat Weight	3.03 CARATS
Color Grade	E
Clarity Grade	VVS 1
Cut Grade	IDEAL



ADDITIONAL GRADING INFORMATION

Polish	EXCELLENT
Symmetry	EXCELLENT
Fluorescence	NONE
Inscription(s)	(修) LG756524003
<p>Comments: This Laboratory Grown Diamond was created by Chemical Vapor Deposition (CVD) growth process.</p> <p>Type IIa</p>	



© IGI 2020, International Gemological Institute

FD - 10 20



THIS DOCUMENT WAS PRODUCED WITH THE FOLLOWING SECURITY MEASURES: SPECIAL DOCUMENT PAPER, INK SCREENS, WATERMARK, BACKGROUND DESIGNS, HOLOGRAM AND OTHER SECURITY FEATURES NOT LISTED AND DO EXCEED DOCUMENT SECURITY INDUSTRY GUIDELINES

www.igi.org

December 30, 2025
 IGI Report No LG756524003
 ROUND BRILLIANT

ROUND BRILLIANT		19 - 9.25 X 5.66 MM		3.03 CARATS	
		Carat Weight		VVS 1	
		Color Grade		IDEAL	
		Clarity Grade		61.3%	
		Cut Grade		59%	
		Depth		Medium to Slightly Thick Faceted	
		Table		Pointed	
		Girdle		EXCELLENT	
		Culet		EXCELLENT	
		Polish		NONE	
Symmetry		VERY GOOD			
Fluorescence					

Comments:
This Laboratory Grown Diamond was created by Chemical Vapor Deposition (CVD) growth process.