



ELECTRONIC COPY

LABORATORY GROWN DIAMOND REPORT

LG756522212
Report verification at igi.org

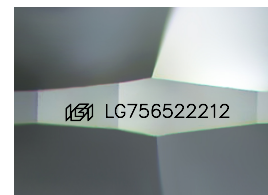
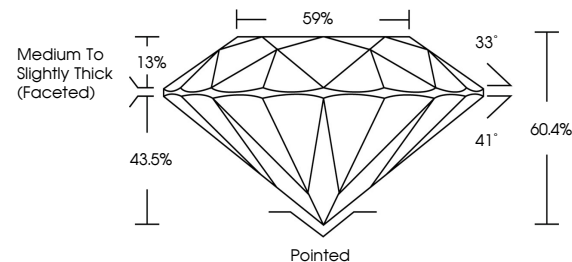
December 27, 2025	
IGI Report Number	LG756522212
Description	LABORATORY GROWN DIAMOND
Shape and Cutting Style	ROUND BRILLIANT
Measurements	8.12 - 8.19 X 4.93 MM
GRADING RESULTS	
Carat Weight	2.01 CARATS
Color Grade	E
Clarity Grade	VS 1
Cut Grade	IDEAL

ADDITIONAL GRADING INFORMATION

Polish	EXCELLENT
Symmetry	EXCELLENT
Fluorescence	NONE
Inscription(s)	 LG756522212

Comments: This Laboratory Grown Diamond was created by Chemical Vapor Deposition (CVD) growth process.
Type IIa

PROPORTIONS



Sample Image Used

COLOR

D E F G H I J Faint Very Light Light

CLARITY

FL	IF	VVS ¹⁻²	VS ¹⁻²	SI ¹⁻²	I ¹⁻³
Flawless	Internally Flawless	Very Very Slightly Included	Very Slightly Included	Slightly Included	Included

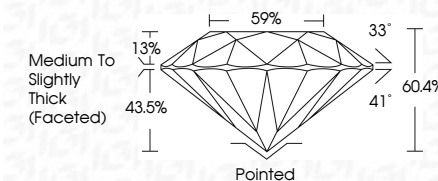
LABORATORY GROWN DIAMOND REPORT



December 27, 2025	
IGI Report Number	LG756522212
Description	LABORATORY GROWN DIAMOND
Shape and Cutting Style	ROUND BRILLIANT
Measurements	8.12 - 8.19 X 4.93 MM
GRADING RESULTS	
Carat Weight	2.01 CARATS
Color Grade	E
Clarity Grade	VS 1
Cut Grade	IDEAL

ADDITIONAL GRADING INFORMATION

Polish	EXCELLENT
Symmetry	EXCELLENT
Fluorescence	NONE
Inscription(s)	 LG75652212
<p>Comments: This Laboratory Grown Diamond was created by Chemical Vapor Deposition (CVD) growth process.</p> <p>Type IIa</p>	



© IGI 2020, International Gemological Institute

FD - 10 20



THIS DOCUMENT WAS PRODUCED WITH THE FOLLOWING SECURITY MEASURES: SPECIAL DOCUMENT PAPER, INK SCREENS, WATERMARK, BACKGROUND DESIGNS, HOLOGRAM AND OTHER SECURITY FEATURES NOT LISTED AND DO EXCEED DOCUMENT SECURITY INDUSTRY GUIDELINES

www.igi.org

December 27, 2025
IGI Report No LG756522212
ROUND BRILLIANT

ROUND BRILLIANT	2.01 CARATS	VS1	IDEAL	50.4%	59%	Medium to Slightly Thick Faceted	Pointed	EXCELLENT	EXCELLENT	NONE	cert. 1754592012
Carat Weight	2.01 CARATS	VS1	IDEAL	50.4%	59%	Medium to Slightly Thick Faceted	Pointed	EXCELLENT	EXCELLENT	NONE	cert. 1754592012
Color Grade	2.01 CARATS	VS1	IDEAL	50.4%	59%	Medium to Slightly Thick Faceted	Pointed	EXCELLENT	EXCELLENT	NONE	cert. 1754592012
Clarity Grade	2.01 CARATS	VS1	IDEAL	50.4%	59%	Medium to Slightly Thick Faceted	Pointed	EXCELLENT	EXCELLENT	NONE	cert. 1754592012
Cut Grade	2.01 CARATS	VS1	IDEAL	50.4%	59%	Medium to Slightly Thick Faceted	Pointed	EXCELLENT	EXCELLENT	NONE	cert. 1754592012
Depth	2.01 CARATS	VS1	IDEAL	50.4%	59%	Medium to Slightly Thick Faceted	Pointed	EXCELLENT	EXCELLENT	NONE	cert. 1754592012
Table	2.01 CARATS	VS1	IDEAL	50.4%	59%	Medium to Slightly Thick Faceted	Pointed	EXCELLENT	EXCELLENT	NONE	cert. 1754592012
Girdle	2.01 CARATS	VS1	IDEAL	50.4%	59%	Medium to Slightly Thick Faceted	Pointed	EXCELLENT	EXCELLENT	NONE	cert. 1754592012
Culet	2.01 CARATS	VS1	IDEAL	50.4%	59%	Medium to Slightly Thick Faceted	Pointed	EXCELLENT	EXCELLENT	NONE	cert. 1754592012
Polish	2.01 CARATS	VS1	IDEAL	50.4%	59%	Medium to Slightly Thick Faceted	Pointed	EXCELLENT	EXCELLENT	NONE	cert. 1754592012
Symmetry	2.01 CARATS	VS1	IDEAL	50.4%	59%	Medium to Slightly Thick Faceted	Pointed	EXCELLENT	EXCELLENT	NONE	cert. 1754592012
Fluorescence	2.01 CARATS	VS1	IDEAL	50.4%	59%	Medium to Slightly Thick Faceted	Pointed	EXCELLENT	EXCELLENT	NONE	cert. 1754592012
Comments	2.01 CARATS	VS1	IDEAL	50.4%	59%	Medium to Slightly Thick Faceted	Pointed	EXCELLENT	EXCELLENT	NONE	cert. 1754592012

Comments:
This Laboratory Grown Diamond was created by Chemical Vapor Deposition (CVD) growth process.