



ELECTRONIC COPY

LABORATORY GROWN DIAMOND REPORT

LG756521528
Report verification at igi.org

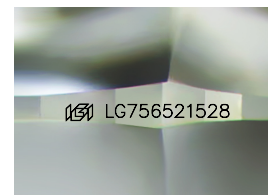
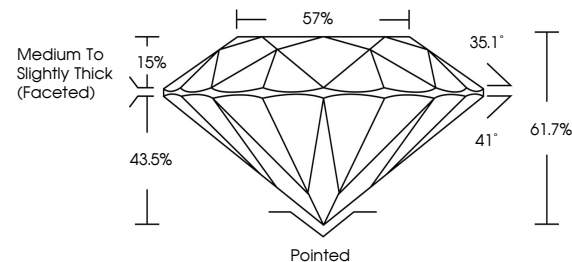
December 23, 2025	
IGI Report Number	LG756521528
Description	LABORATORY GROWN DIAMOND
Shape and Cutting Style	ROUND BRILLIANT
Measurements	9.28 - 9.31 X 5.73 MM
GRADING RESULTS	
Carat Weight	3.05 CARATS
Color Grade	F
Clarity Grade	VVS 2
Cut Grade	IDEAL

ADDITIONAL GRADING INFORMATION

Polish	EXCELLENT
Symmetry	EXCELLENT
Fluorescence	NONE
Inscription(s)	151 LG756521528

Comments: This Laboratory Grown Diamond was created by Chemical Vapor Deposition (CVD) growth process.
Type IIa

PROPORTIONS



Sample Image Used

COLOR

D E F G H I J Faint Very Light Light

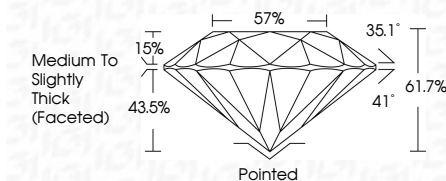
CLARITY

FL	IF	VVS ¹⁻²	VS ¹⁻²	SI ¹⁻²	I ¹⁻³
Flawless	Internally Flawless	Very Very Slightly Included	Very Slightly Included	Slightly Included	Included

LABORATORY GROWN DIAMOND REPORT



December 23, 2025	
IGI Report Number	LG756521528
Description	LABORATORY GROWN DIAMOND
Shape and Cutting Style	ROUND BRILLIANT
Measurements	9.28 - 9.31 X 5.73 MM
GRADING RESULTS	
Carat Weight	3.05 CARATS
Color Grade	F
Clarity Grade	VVS 2
Cut Grade	IDEAL



ADDITIONAL GRADING INFORMATION

Polish	EXCELLENT
Symmetry	EXCELLENT
Fluorescence	NONE
Inscription(s)	 LG756521528
<p>Comments: This Laboratory Grown Diamond was created by Chemical Vapor Deposition (CVD) growth process.</p> <p>Type IIa</p>	



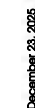
© IGI 2020, International Gemological Institute

FD - 10 20



THIS DOCUMENT WAS PRODUCED WITH THE FOLLOWING SECURITY MEASURES: SPECIAL DOCUMENT PAPER, INK SCREENS, WATERMARK, BACKGROUND DESIGNS, HOLOGRAM AND OTHER SECURITY FEATURES NOT LISTED AND DO EXCEED DOCUMENT SECURITY INDUSTRY GUIDELINES

www.igi.org

December 23, 2025
CI Report No. 1C754531539

LG Report No LG75
PO BOX 10000

2.28 - 9.31 X 5.73 MM

Carat Weight	3.05 CARATS
--------------	-------------

Color Grade	F
-------------	---

	WS2	IDEAL
Clarity Grade		
Cut Grade		

Depth	61.7%
Table	57%

labile	57%
Girdle	Medium To Slightly

Thick (Faceted)

	Pointed	EXCELLENT
Culet		
Polish		

Symmetry

Fluorescence	None
Inscription(s)	151 LG756521528

Comments:

Comments:
This Laboratory Grown Diamond was created by Chemical Vapor Deposition

type IIa