



ELECTRONIC COPY

LG756520983
Report verification at igi.org



December 23, 2025
IGI Report Number **LG756520983**
Description **LABORATORY GROWN DIAMOND**
Shape and Cutting Style **SQUARE CUSHION MODIFIED BRILLIANT**
Measurements **7.35 X 7.00 X 4.46 MM**
GRADING RESULTS
Carat Weight **2.02 CARATS**
Color Grade **FANCY INTENSE YELLOW**
Clarity Grade **VS 1**

December 23, 2025
IGI Report Number **LG756520983**
Description **LABORATORY GROWN DIAMOND**
Shape and Cutting Style **SQUARE CUSHION MODIFIED BRILLIANT**
Measurements **7.35 X 7.00 X 4.46 MM**

GRADING RESULTS

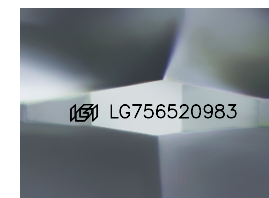
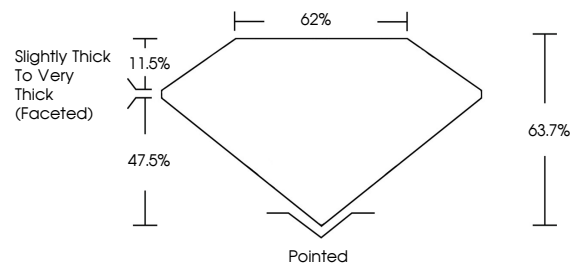
Carat Weight **2.02 CARATS**
Color Grade **FANCY INTENSE YELLOW**
Clarity Grade **VS 1**

ADDITIONAL GRADING INFORMATION

Polish **VERY GOOD**
Symmetry **EXCELLENT**
Fluorescence **VERY SLIGHT**
Inscription(s) **IGI LG756520983**

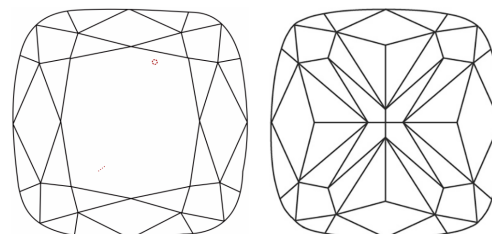
Comments: This Laboratory Grown Diamond was created by Chemical Vapor Deposition (CVD) growth process. Indications of post-growth treatment.

PROPORTIONS



Sample Image Used

CLARITY CHARACTERISTICS



KEY TO SYMBOLS

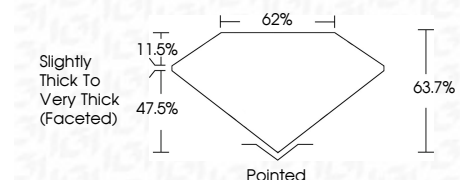
Red symbols indicate internal characteristics.
Green symbols indicate external characteristics.

COLOR

D E F G H I J Faint Very Light Light

CLARITY

FL	IF	VS ¹⁻²	VS ¹⁻²	SI ¹⁻²	I ¹⁻³
Flawless	Internally Flawless	Very Very Slightly Included	Very Slightly Included	Slightly Included	Included



ADDITIONAL GRADING INFORMATION

Polish **VERY GOOD**
Symmetry **EXCELLENT**
Fluorescence **VERY SLIGHT**
Inscription(s) **IGI LG756520983**
Comments: This Laboratory Grown Diamond was created by Chemical Vapor Deposition (CVD) growth process. Indications of post-growth treatment.



December 23, 2025
IGI Report No LG756520983
SQUARE CUSHION MODIFIED BRILLIANT
7.35 X 7.00 X 4.46 MM
2.02 CARATS
FANCY INTENSE YELLOW
VS 1
63.7%
62%
Slightly Thick To Very Thick (Faceted)
Pointed
VERY GOOD
EXCELLENT
VERY SLIGHT
IGI LG756520983
Comments: This Laboratory Grown Diamond was created by Chemical Vapor Deposition (CVD) growth process. Indications of post-growth treatment.