



**ELECTRONIC COPY**

LG756520915  
Report verification at igi.org



December 23, 2025

IGI Report Number **LG756520915**

Description **LABORATORY GROWN DIAMOND**

Shape and Cutting Style **ROUND BRILLIANT**

Measurements **8.09 - 8.14 X 4.99 MM**

**GRADING RESULTS**

Carat Weight **2.03 CARATS**

Color Grade **F**

Clarity Grade **VVS 2**

Cut Grade **IDEAL**

December 23, 2025

IGI Report Number **LG756520915**

Description **LABORATORY GROWN DIAMOND**

Shape and Cutting Style **ROUND BRILLIANT**

Measurements **8.09 - 8.14 X 4.99 MM**

**GRADING RESULTS**

Carat Weight **2.03 CARATS**

Color Grade **F**

Clarity Grade **VVS 2**

Cut Grade **IDEAL**

**ADDITIONAL GRADING INFORMATION**

Polish **EXCELLENT**

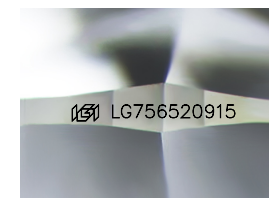
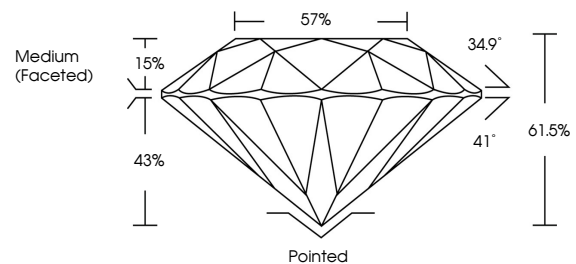
Symmetry **EXCELLENT**

Fluorescence **NONE**

Inscription(s) **LG756520915**

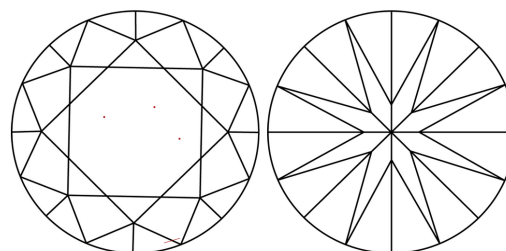
Comments: This Laboratory Grown Diamond was created by Chemical Vapor Deposition (CVD) growth process. Type IIa

**PROPORTIONS**



Sample Image Used

**CLARITY CHARACTERISTICS**



**KEY TO SYMBOLS**

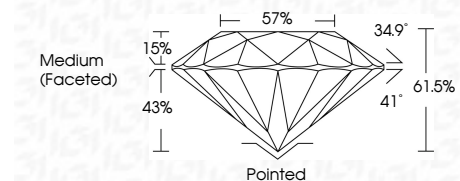
Red symbols indicate internal characteristics.  
Green symbols indicate external characteristics.

**COLOR**

D E F G H I J Faint Very Light Light

**CLARITY**

FL	IF	VVS <sup>1-2</sup>	VS <sup>1-2</sup>	SI <sup>1-2</sup>	I <sup>1-3</sup>
Flawless	Internally Flawless	Very Very Slightly Included	Very Slightly Included	Slightly Included	Included



**ADDITIONAL GRADING INFORMATION**

Polish **EXCELLENT**

Symmetry **EXCELLENT**

Fluorescence **NONE**

Inscription(s) **LG756520915**

Comments: This Laboratory Grown Diamond was created by Chemical Vapor Deposition (CVD) growth process. Type IIa



**IGI**



December 23, 2025	IGI Report No <b>LG756520915</b>	<b>2.03 CARATS</b>	<b>F</b>	<b>Pointed</b>
<b>8.09 - 8.14 X 4.99 MM</b>	<b>ROUND BRILLIANT</b>	Carat Weight	Color Grade	Polish
				<b>EXCELLENT</b>
		Clarity Grade	Cut Grade	Symmetry
		<b>VVS 2</b>	<b>IDEAL</b>	<b>EXCELLENT</b>
		Depth	Table	Fluorescence
		<b>61.5%</b>	<b>57%</b>	<b>NONE</b>
		Medium (Faceted)	Inscription(s)	<b>None</b>
			<b>LG756520915</b>	
Comments: This Laboratory Grown Diamond was created by Chemical Vapor Deposition (CVD) growth process. Type IIa				