



**INTERNATIONAL
GEMOLOGICAL
INSTITUTE**

ELECTRONIC COPY

LABORATORY GROWN DIAMOND REPORT

LG756520386
Report verification at igi.org

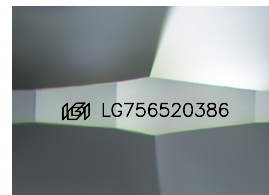
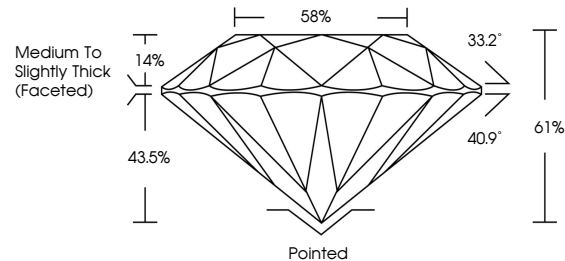
| | |
|-------------------------|--------------------------|
| December 22, 2025 | |
| IGI Report Number | LG756520386 |
| Description | LABORATORY GROWN DIAMOND |
| Shape and Cutting Style | ROUND BRILLIANT |
| Measurements | 8.17 - 8.20 X 4.99 MM |
| GRADING RESULTS | |
| Carat Weight | 2.05 CARATS |
| Color Grade | D |
| Clarity Grade | VVS 2 |
| Cut Grade | IDEAL |

ADDITIONAL GRADING INFORMATION

| | |
|----------------|---|
| Polish | EXCELLENT |
| Symmetry | EXCELLENT |
| Fluorescence | NONE |
| Inscription(s) |  LG756520386 |

Comments: This Laboratory Grown Diamond was created by Chemical Vapor Deposition (CVD) growth process.
Type IIa

PROPORTIONS



Sample Image Used

COLOR

D E F G H I J Faint Very Light Light

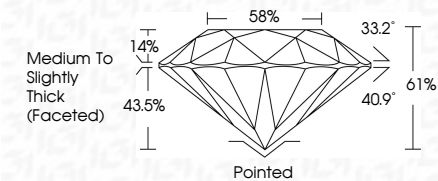
CLARITY

| FL | IF | VVS ¹⁻² | VS ¹⁻² | SI ¹⁻² | I ¹⁻³ |
|----------|---------------------|-----------------------------|------------------------|-------------------|------------------|
| Flawless | Internally Flawless | Very Very Slightly Included | Very Slightly Included | Slightly Included | Included |

LABORATORY GROWN DIAMOND REPORT



| | |
|-------------------------|--------------------------|
| December 22, 2025 | |
| IGI Report Number | LG756520386 |
| Description | LABORATORY GROWN DIAMOND |
| Shape and Cutting Style | ROUND BRILLIANT |
| Measurements | 8.17 - 8.20 X 4.99 MM |
| GRADING RESULTS | |
| Carat Weight | 2.05 CARATS |
| Color Grade | D |
| Clarity Grade | VVS 2 |
| Cut Grade | IDEAL |



ADDITIONAL GRADING INFORMATION

| | |
|---|---|
| Polish | EXCELLENT |
| Symmetry | EXCELLENT |
| Fluorescence | NONE |
| Inscription(s) |  LG756520386 |
| <p>Comments: This Laboratory Grown Diamond was created by Chemical Vapor Deposition (CVD) growth process.</p> <p>Type IIa</p> | |



IGI



© IGI 2020, International Gemological Institute

FD - 10 20



THIS DOCUMENT WAS PRODUCED WITH THE FOLLOWING SECURITY MEASURES: SPECIAL DOCUMENT PAPER, INK SCREENS, WATERMARK, BACKGROUND DESIGNS, HOLOGRAM AND OTHER SECURITY FEATURES NOT LISTED AND DO EXCEED DOCUMENT SECURITY INDUSTRY GUIDELINES

December 22, 2025
IGI Report No LG756520386
ROUND BRILLIANT

8.17 - 8.20 X 4.99 MM
Carat Weight 2.05 CARATS

| | |
|--------------|-------------|
| Carat Weight | 2.05 CARATS |
| Color Grade | D |

| | VS 2 | IDEAL |
|---------------|------|-------|
| Clarity Grade | | |
| Cut Grade | | |

| | |
|-----------|-------|
| Cut Grade | IDEAL |
| Depth | 61% |
| Table | 58% |

| | |
|--------|-----------------------------------|
| Table | 58% |
| Girdle | Medium To Slightly Tight (5-6 cm) |

| Girdle | Medium To Slightly Thick (Faceted) | Dated |
|--------|------------------------------------|-------|
| Culet | | |

| | Pointed | EXCELLENT |
|--------|---------|-----------|
| Culet | | |
| Polish | | |

| | | |
|----------------|--|------------------|
| Symmetry | | EXCELLENT |
| Fluorescence | | NONE |
| Inscription(s) | | 1951 LG756520386 |

Comments:
This Laboratory Grown Diamond was
created by Chemical Vapor Deposition

This Laboratory Grown Diamond was created by Chemical Vapor Deposition (CVD) growth process.
Type IIa

Type IIa
(CVB) growth process.